



GGI-KENYA

2023

Proofs: April 2023

Holstein
Red Holstein
Fleckvieh
Brown Swiss
Angler

Daughter Proven
Genomic



Christine Massfeller



GGI-SPERMEX
Genetics made in Germany

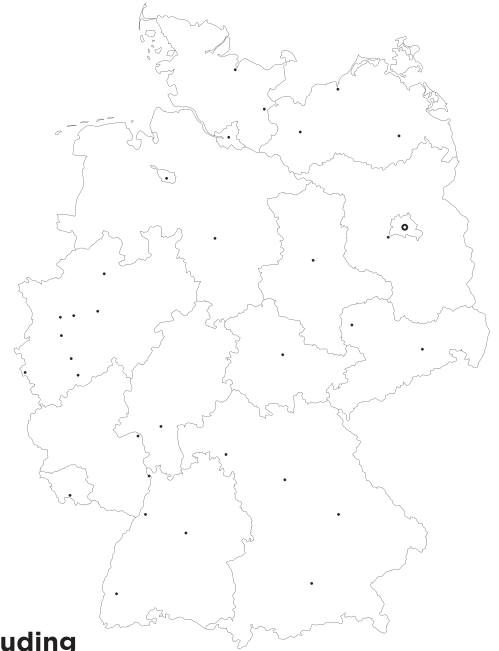
SIRE
CATALOGUE

Our Potential

PROFIT FROM THE LARGEST AND MOST EFFICIENT BREEDING PROGRAMS IN THE WORLD!

Germany has...

- ... the largest registered Holstein population worldwide
- ... the largest registered Red Holstein population worldwide
- ... the largest reference population with more than 46,800 sires and 390,000 cows (vit 12-2022)
- ... more than 1,500,000 registered Holstein cows
- ... more than 145,000 registered Red Holstein cows
- ... more than 708,000 registered German Fleckvieh cows
- ... more than 116,000 registered Brown Swiss cows
- ... proven cow families having deep pedigrees
- ... one of the oldest Holstein herd books in the world (1878) including overall data of more than 100,000,000 cattle
- ... national and international breeding programs
- ... the largest and most versatile reference populations in the world
- ... balanced breeding goals



Source: BRS annual report 2022

Abbreviations USED IN THIS CATALOGUE

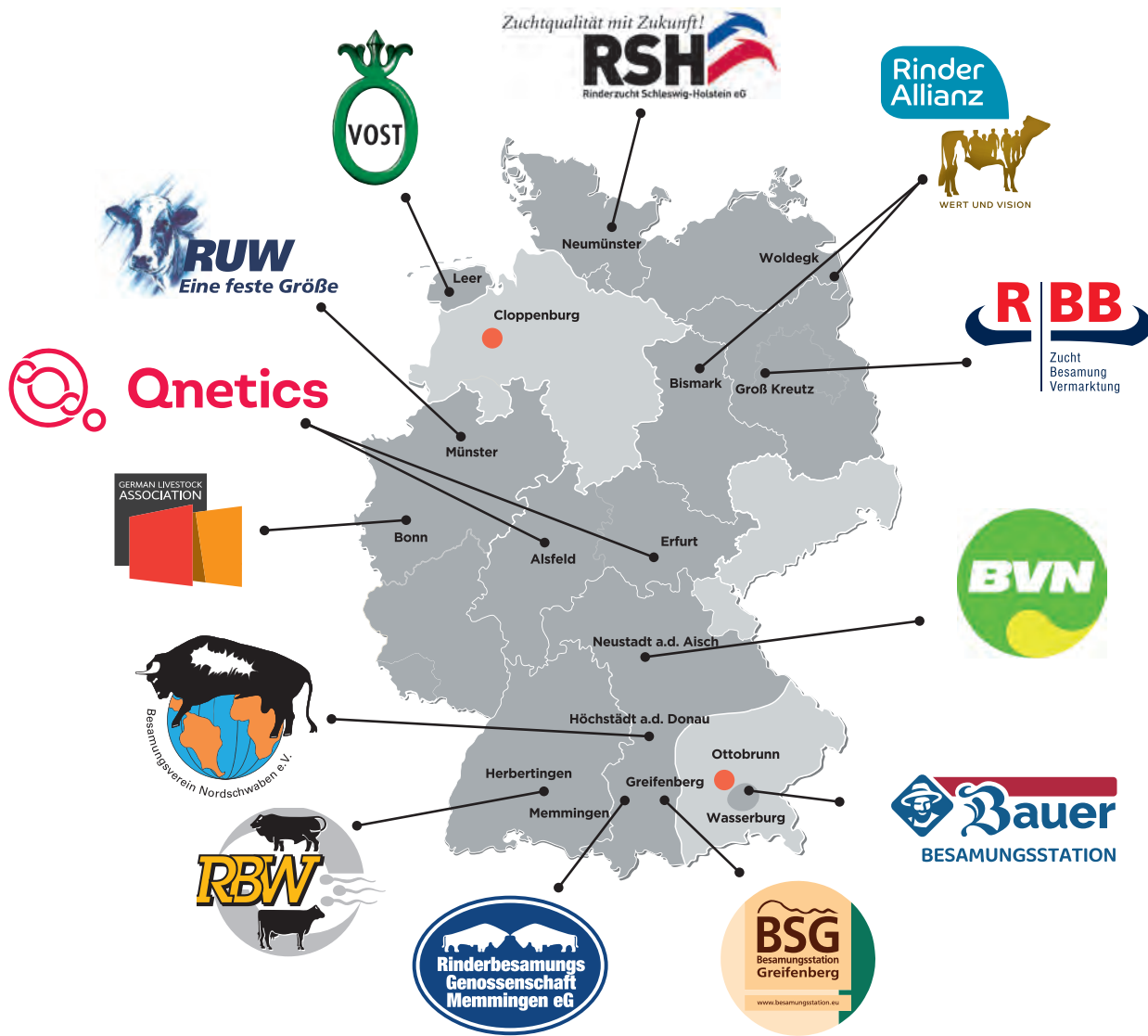
ALL HOLSTEIN BULLS IN THIS CATALOGUE ARE FREE OF BRACHYSPINA, BLAD, CVM AND CDH.

RZG	Total Merit Index	RZRobot	Breeding value Suitability for automatic milking systems (AMS)
RZ€	Economic Total Merit Index	GD	Granddam
RZM	Breeding value Milk production	GGD	Great Granddam
RZE	Breeding value Conformation	GGGD	Great Great Granddam
RZS	Breeding value Somatic cell count	aAa	Triple A code by Weeks® Animal Analysis
RZN	Breeding value Longevity	HB-Nr.	Herd book number
RZR	Breeding value Daughter fertility	VRC	Carrier of the Variant Red gene
RZKd	Breeding value Calving ease (paternal calving ease)	RDF	Tested non-carrier of red gene
RZKm	Breeding value Calving ease (maternal calving ease)	RDC	Red carrier
RZD	Breeding value Milking speed	AMS	Automatic milking systems
RZhealth	Breeding value Health	Rear leg set r.v.	Rear leg set rear view
RZudderfit	Breeding value Udder health	Rear udder h.	Rear udder height
RZhoof	Breeding value Hoof health	Suspens. lig.	Suspensory ligament
RZrepro	Breeding value Reproduction	Teat placem. f.	Teat placement (front)
RZmetabol	Breeding value Metabolic health	Teat placem. r.	Teat placement (rear)
DDcontrol	Breeding value Mortellaro resistance	Fore udder att.	Fore udder attachment
RZcalfhealth	Breeding value Calf health	vit	Data processing center

GGI-SPERMEX Members



GGI-SPERMEX
Genetics made in Germany



● GGI-SPERMEX offices

Having more than 1.2 million active dairy cows and nearly 35,000 active beef cows registered in their herdbooks, the GGI-SPERMEX members take care of almost 70% of the actual cattle breeding population in Germany.

Backed by the data and experience of more than 9,000 dairy herd book farms, GGI-SPERMEX is able to map all environmental and management conditions across Germany and, through this, offer ideal matings for any environmental conditions.

Baldus

KAX Baldus

574193 born: 22.08.2019
 HOLDEUM000123451750
aAa 243651



Baldus

RZG	RZ€	RZM	RZE	RZS	RZN	RZR	RZKd	RZKm	RZD
134	1393	133	116	109	104	112	103	104	92
82 %	84 %	76 %	73 %	78 %	68 %	55 %	74 %	65 %	77 %

RZ health	109	72 %
RZ udderfit	103	63 %
RZ hoof	106	54 %
RZ metabol	101	57 %
RZ repro	109	54 %
RZ calfhealth	109	62 %
DDcontrol	105	53 %

RZRobot	---	-- %
RZpersistence	104	65 %
Cappa-Casein	AB	
Beta-Casein	A2A2	
Milk	Fat	Protein
+850 kg	+0.16 %	+0.13 %
	+51 kg	+44 kg
Reliability	76 %	
Daughters	-	
Herds	-	

	76	88	100	112	124		
Dairy type						105	
Body						104	
Feet & Legs						109	
Udder						112	
Stature	small					105	tall
Rib Structure	flat					102	arched
Body depth	shallow					98	deep
Strength	narrow					102	wide
Rump angle	ascending					103	sloped
Rump width	narrow					101	wide
Rear leg angle	straight					96	sickled
Foot angle	low angle					102	steep angle
Hocks	swollen					105	clean
Rear leg set r.v.	toes out					103	parallel
Front Feet Orientation	outward					105	straight
Locomotion	bad					106	good
Rear udder h.	low					113	high
Suspens. lig.	weak					112	strong
Teat placem.f.	wide					98	close
Teat placem.r.	wide					104	close
Fore udder att.	loose					110	tight
Udder Balance	rear deep					99	front deep
Udder depth	deep					105	shallow
Teat length	short					94	long

- Functionality
- Daughter fertility
- Udder

Proof: VIT / 04-2023

Daughters/Herds: -/-

Beatclub

Koepon

619154 born: 17.07.2016
 HOLNLDLM000734691569
aAa 342516



Beatrice

RZG	RZ€	RZM	RZE	RZS	RZN	RZR	RZKd	RZKm	RZD
141	1675	132	131	96	130	91	118	100	104
98 %	98 %	99 %	97 %	98 %	92 %	86 %	96 %	95 %	95 %

RZ health	107	95 %
RZ udderfit	105	93 %
RZ hoof	110	91 %
RZ metabol	103	89 %
RZ repro	96	88 %
RZ calfhealth	104	92 %
DDcontrol	113	93 %

RZRobot	130	96 %
RZpersistence	119	96 %
Cappa-Casein	AB	
Beta-Casein	A2A2	
Milk	Fat	Protein
+507 kg	+0.37 %	+0.19 %
	+60 kg	+38 kg
Reliability	99 %	
Daughters	1205	
Herds	221	

	76	88	100	112	124		
Dairy type						118	
Body						108	
Feet & Legs						130	
Udder						115	
Stature	small					103	tall
Rib Structure	flat					105	arched
Body depth	shallow					101	deep
Strength	narrow					98	wide
Rump angle	ascending					89	sloped
Rump width	narrow					114	wide
Rear leg angle	straight					99	sickled
Foot angle	low angle					123	steep angle
Hocks	swollen					109	clean
Rear leg set r.v.	toes out					115	parallel
Front Feet Orientation	outward					103	straight
Locomotion	bad					122	good
Rear udder h.	low					113	high
Suspens. lig.	weak					89	strong
Teat placem.f.	wide					108	close
Teat placem.r.	wide					85	close
Fore udder att.	loose					115	tight
Udder Balance	rear deep					98	front deep
Udder depth	deep					108	shallow
Teat length	short					114	long

- Conformation
- Fits for AMS
- Heifer bull

Proof: VIT / 04-2023

Daughters/Herds: 452/116

Bonfire

156569 born: 09.09.2016
 HOLDNKM000000258887
 aAa 324615



Geske 292

RZG 128 97 %	RZ€ 836 97 %	RZM 125 99 %	RZE 132 95 %	RZS 108 98 %	RZN 111 92 %	RZR 96 85 %	RZKd 96 93 %	RZKm 98 95 %	RZD 101 91 %
----------------------------------	----------------------------------	----------------------------------	----------------------------------	----------------------------------	----------------------------------	---------------------------------	----------------------------------	----------------------------------	----------------------------------

RZ health	104	91 %
RZ udderfit	102	87 %
RZ hoof	111	85 %
RZ metabol	97	81 %
RZ repro	101	79 %
RZ calfhealth	91	90 %
DDcontrol	104	88 %

RZRobot	---	-- %
RZpersistence	102	95 %
Cappa-Casein	AE	
Beta-Casein	A1A2	
Milk	Fat	Protein
+934 kg	-0.13 %	+0.07 %
	+23 kg	+40 kg
Reliability	99 %	
Daughters	1126	
Herds	395	

	76	88	100	112	124	
Dairy type						120
Body						107
Feet & Legs						121
Udder						124
Stature	small					122 tall
Rib Structure	flat					107 arched
Body depth	shallow					101 deep
Strength	narrow					106 wide
Rump angle	ascending					108 sloped
Rump width	narrow					108 wide
Rear leg angle	straight					90 sickled
Foot angle	low angle					113 steep angle
Hocks	swollen					110 clean
Rear leg set r.v.	toes out					113 parallel
Front Feet Orientation	outward					108 straight
Locomotion	bad					115 good
Rear udder h.	low					129 high
Suspens. lig.	weak					117 strong
Teat placem.f.	wide					116 close
Teat placem.r.	wide					120 close
Fore udder att.	loose					114 tight
Udder Balance	rear deep					113 front deep
Udder depth	deep					117 shallow
Teat length	short					97 long

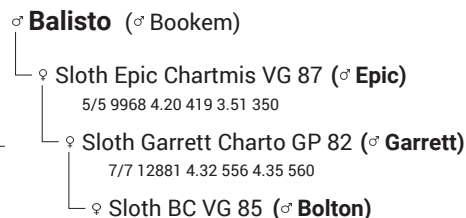
- Udder
- Feet & legs
- Milk production

Proof: VIT / 04-2023

Daughters/Herds: 346/99

Bonum

823160 born: 07.01.2015
 HOLDNKM000000257840
 aAa 432516



Betty

RZG 135 99 %	RZ€ 1372 99 %	RZM 134 99 %	RZE 120 99 %	RZS 116 99 %	RZN 121 99 %	RZR 80 96 %	RZKd 108 99 %	RZKm 98 99 %	RZD 96 98 %
----------------------------------	-----------------------------------	----------------------------------	----------------------------------	----------------------------------	----------------------------------	---------------------------------	-----------------------------------	----------------------------------	---------------------------------

RZ health	110	98 %
RZ udderfit	108	97 %
RZ hoof	107	97 %
RZ metabol	108	95 %
RZ repro	97	95 %
RZ calfhealth	99	98 %
DDcontrol	107	98 %

RZRobot	119	99 %
RZpersistence	116	99 %
Cappa-Casein	BB	
Beta-Casein	A2A2	
Milk	Fat	Protein
+1077 kg	-0.15 %	+0.19 %
	+26 kg	+58 kg
Reliability	99 %	
Daughters	6184	
Herds	1330	

	76	88	100	112	124	
Dairy type						104
Body						113
Feet & Legs						109
Udder						115
Stature	small					110 tall
Rib Structure	flat					98 arched
Body depth	shallow					106 deep
Strength	narrow					106 wide
Rump angle	ascending					104 sloped
Rump width	narrow					109 wide
Rear leg angle	straight					90 sickled
Foot angle	low angle					110 steep angle
Hocks	swollen					103 clean
Rear leg set r.v.	toes out					99 parallel
Front Feet Orientation	outward					121 straight
Locomotion	bad					107 good
Rear udder h.	low					113 high
Suspens. lig.	weak					97 strong
Teat placem.f.	wide					109 close
Teat placem.r.	wide					91 close
Fore udder att.	loose					112 tight
Udder Balance	rear deep					107 front deep
Udder depth	deep					111 shallow
Teat length	short					106 long

Proof: VIT / 04-2023

Daughters/Herds: 1716/348

Brilliance

Westcoast RUW Brilliance

681825 born: 19.08.2016
 HOLDEUM000539335800
aAa 423165



RZG 122 96 %	RZ€ 806 95 %	RZM 111 98 %	RZE 117 95 %	RZS 129 96 %	RZN 119 85 %	RZR 95 77 %	RZKd 99 88 %	RZKm 92 91 %	RZD 85 94 %
----------------------------------	----------------------------------	----------------------------------	----------------------------------	----------------------------------	----------------------------------	---------------------------------	----------------------------------	----------------------------------	---------------------------------

RZ health	114	86 %
RZ udderfit	108	81 %
RZ hoof	109	76 %
RZ metabol	106	74 %
RZ repro	107	71 %
RZ calfhealth	105	82 %
DDcontrol	107	78 %

RZRobot	---	---	---
RZpersistence	122	90 %	
Cappa-Casein	AA		
Beta-Casein	A1A2		
Milk	+847 kg	Fat	Protein
		-0.05 %	-0.18 %
		+28 kg	+9 kg
Reliability	98 %		
Daughters	501		
Herds	227		

	76	88	100	112	124		
Dairy type						116	
Body						90	
Feet & Legs						110	
Udder						118	
Stature	small					107	tall
Rib Structure	flat					106	arched
Body depth	shallow					95	deep
Strength	narrow					85	wide
Rump angle	ascending					91	sloped
Rump width	narrow					94	wide
Rear leg angle	straight					88	sickled
Foot angle	low angle					102	steep angle
Hocks	swollen					121	clean
Rear leg set r.v.	toes out					100	parallel
Front Feet Orientation	outward					77	straight
Locomotion	bad					101	good
Rear udder h.	low					108	high
Suspens. lig.	weak					115	strong
Teat placem.f.	wide					108	close
Teat placem.r.	wide					109	close
Fore udder att.	loose					113	tight
Udder Balance	rear deep					112	front deep
Udder depth	deep					119	shallow
Teat length	short					106	long

- Conformation
- Longevity
- Daughter fertility

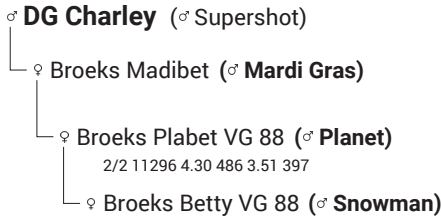
Proof: VIT / 04-2023

Daughters/Herds: 263/115

Casino

VEELHORST DG MADRID

156583 born: 11.02.2017
 HOLNLDM000865720444
aAa 351426



RZG 148 98 %	RZ€ 2119 98 %	RZM 152 99 %	RZE 115 99 %	RZS 118 99 %	RZN 125 92 %	RZR 100 92 %	RZKd 110 98 %	RZKm 111 98 %	RZD 101 98 %
----------------------------------	-----------------------------------	----------------------------------	----------------------------------	----------------------------------	----------------------------------	----------------------------------	-----------------------------------	-----------------------------------	----------------------------------

RZ health	105	96 %
RZ udderfit	100	94 %
RZ hoof	106	91 %
RZ metabol	104	92 %
RZ repro	106	88 %
RZ calfhealth	109	97 %
DDcontrol	103	93 %

RZRobot	109	99 %	
RZpersistence	97	94 %	
Cappa-Casein	--		
Beta-Casein	A2A2		
Milk	+1749 kg	Fat	Protein
		+0.16 %	+0.04 %
		+88 kg	+65 kg
Reliability	99 %		
Daughters	4332		
Herds	1046		

	76	88	100	112	124		
Dairy type						116	
Body						111	
Feet & Legs						115	
Udder						101	
Stature	small					107	tall
Rib Structure	flat					110	arched
Body depth	shallow					112	deep
Strength	narrow					105	wide
Rump angle	ascending					113	sloped
Rump width	narrow					101	wide
Rear leg angle	straight					96	sickled
Foot angle	low angle					117	steep angle
Hocks	swollen					100	clean
Rear leg set r.v.	toes out					102	parallel
Front Feet Orientation	outward					110	straight
Locomotion	bad					113	good
Rear udder h.	low					101	high
Suspens. lig.	weak					92	strong
Teat placem.f.	wide					111	close
Teat placem.r.	wide					105	close
Fore udder att.	loose					103	tight
Udder Balance	rear deep					102	front deep
Udder depth	deep					95	shallow
Teat length	short					97	long

- Milk production
- Functionality
- Hoof health

Proof: VIT / 04-2023

Daughters/Herds: 2276/475

Hogwart PP

KNS Hogwart PP

PP*

823233 born: 07.12.2018

HOLDEUM000361080162

aAa 432561



♂ **Hotspot P** (♂ Superhero)

♀ KNS Missboard VG 85 (♂ Board)

1/1 10918 4.44 485 3.75 409

♀ KNS Missbalisto GP 84 (♂ Balisto)

1/1 7132 4.44 317 3.39 242

♀ KNS Miss Epic GP 82 (♂ Epic)



genomic

HOLSTEIN

Hogwart PP

RZG	RZ€	RZM	RZE	RZS	RZN	RZR	RZKd	RZKm	RZD
127	1064	123	109	107	114	113	111	101	90
84 %	86 %	76 %	76 %	78 %	70 %	60 %	98 %	68 %	80 %

RZ health	108	76 %
RZ udderfit	109	67 %
RZ hoof	102	59 %
RZ metabol	98	63 %
RZ repro	103	60 %
RZ calfhealth	86	94 %
DDcontrol	94	58 %

RZRobot	---	-- %
RZpersistence	105	66 %
Cappa-Casein	AE	
Beta-Casein	A2A2	
Milk	Fat	Protein
+372 kg	+0.20 %	+0.15 %
	+36 kg	+29 kg
Reliability	76 %	
Daughters	-	
Herds	-	

	76	88	100	112	124	
Dairy type						105
Body						93
Feet & Legs						105
Udder						111
Stature	small					99 tall
Rib Structure	flat					103 arched
Body depth	shallow					98 deep
Strength	narrow					94 wide
Rump angle	ascending					88 sloped
Rump width	narrow					93 wide
Rear leg angle	straight					81 sickled
Foot angle	low angle					111 steep angle
Hocks	swollen					103 clean
Rear leg set r.v.	toes out					98 parallel
Front Feet Orientation	outward					92 straight
Locomotion	bad					103 good
Rear udder h.	low					112 high
Suspens. lig.	weak					106 strong
Teat placem.f.	wide					100 close
Teat placem.r.	wide					104 close
Fore udder att.	loose					110 tight
Udder Balance	rear deep					108 front deep
Udder depth	deep					109 shallow
Teat length	short					92 long

- Functionality
- Milk & Components
- Fits for AMS

Proof: VIT / 04-2023

Daughters/Herds: -/-

Kensington

Anderstrup Kensington

684688 born: 10.04.2017

HOLDNKM00000259312

aAa 423156



♂ **Kerrigan** (♂ Kingboy)

♀ Anderstrup Commander Milla VG 88 (♂ Commander)

4/4 19293 3.68 710 3.32 641

♀ Debel Bynke Myself VG 87 (♂ Bynke)

6/6 16975 3.59 609 3.25 551

♀ Debel Planet Mani VG 85 (♂ Planet)



progeny tested

HOLSTEIN

Valletta

RZG	RZ€	RZM	RZE	RZS	RZN	RZR	RZKd	RZKm	RZD
136	1628	148	105	122	108	95	98	108	87
97 %	97 %	99 %	98 %	99 %	89 %	85 %	94 %	96 %	97 %

RZ health	106	91 %
RZ udderfit	102	87 %
RZ hoof	101	82 %
RZ metabol	107	82 %
RZ repro	105	80 %
RZ calfhealth	104	93 %
DDcontrol	98	85 %

RZRobot	---	-- %
RZpersistence	124	91 %
Cappa-Casein	AB	
Beta-Casein	A2A2	
Milk	Fat	Protein
+1215 kg	+0.25 %	+0.18 %
	+76 kg	+63 kg
Reliability	99 %	
Daughters	1876	
Herds	705	

	76	88	100	112	124	
Dairy type						117
Body						108
Feet & Legs						101
Udder						99
Stature	small					124 tall
Rib Structure	flat					92 arched
Body depth	shallow					109 deep
Strength	narrow					92 wide
Rump angle	ascending					93 sloped
Rump width	narrow					119 wide
Rear leg angle	straight					104 sickled
Foot angle	low angle					105 steep angle
Hocks	swollen					93 clean
Rear leg set r.v.	toes out					107 parallel
Front Feet Orientation	outward					82 straight
Locomotion	bad					99 good
Rear udder h.	low					103 high
Suspens. lig.	weak					126 strong
Teat placem.f.	wide					106 close
Teat placem.r.	wide					117 close
Fore udder att.	loose					92 tight
Udder Balance	rear deep					103 front deep
Udder depth	deep					92 shallow
Teat length	short					134 long

- Milk production
- Type
- A2A2

Proof: VIT / 04-2023

Daughters/Herds: 832/299

Lover

Ronelee RUW LOVER

688217 born: 24.11.2019
 HOLDEUM000540935242
aAa 234165



RZG	RZ€	RZM	RZE	RZS	RZN	RZR	RZKd	RZKm	RZD
138	1505	123	116	108	122	109	100	104	104
82 %	84 %	75 %	73 %	77 %	67 %	55 %	60 %	65 %	77 %

RZ health	120	71 %
RZ udderfit	109	62 %
RZ hoof	110	51 %
RZ metabol	107	57 %
RZ repro	112	53 %
RZ calfhealth	102	49 %
DDcontrol	107	51 %

RZRobot	---	-- %
RZpersistence	103	62 %
Cappa-Casein	BB	
Beta-Casein	A2A2	
Milk	Fat	Protein
+1082 kg	-0.16 %	-0.02 %
	+25 kg	+35 kg
Reliability	75 %	
Daughters	-	
Herds	-	

	76	88	100	112	124		
Dairy type						103	
Body						100	
Feet & Legs						101	
Udder						121	
Stature	small					110	tall
Rib Structure	flat					105	arched
Body depth	shallow					97	deep
Strength	narrow					98	wide
Rump angle	ascending					113	sloped
Rump width	narrow					103	wide
Rear leg angle	straight					88	sickled
Foot angle	low angle					118	steep angle
Hocks	swollen					88	clean
Rear leg set r.v.	toes out					103	parallel
Front Feet Orientation	outward					92	straight
Locomotion	bad					99	good
Rear udder h.	low					111	high
Suspens. lig.	weak					103	strong
Teat placem.f.	wide					110	close
Teat placem.r.	wide					106	close
Fore udder att.	loose					123	tight
Udder Balance	rear deep					104	front deep
Udder depth	deep					121	shallow
Teat length	short					97	long

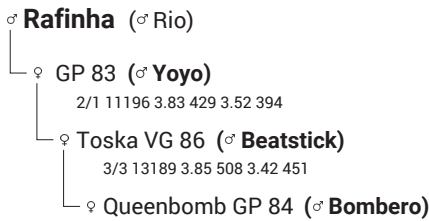
- Longevity
- Fits for AMS
- Udder

Proof: VIT / 04-2023

Daughters/Herds: -/-

Runtime

575222 born: 04.01.2021
 HOLDEUM000124307172
aAa 243615



RZG	RZ€	RZM	RZE	RZS	RZN	RZR	RZKd	RZKm	RZD
144	1760	135	120	107	120	98	101	109	106
81 %	83 %	74 %	72 %	76 %	66 %	52 %	60 %	63 %	76 %

RZ health	117	70 %
RZ udderfit	105	61 %
RZ hoof	107	51 %
RZ metabol	115	55 %
RZ repro	106	52 %
RZ calfhealth	89	48 %
DDcontrol	112	51 %

RZRobot	118	73 %
RZpersistence	119	61 %
Cappa-Casein	AB	
Beta-Casein	A2A2	
Milk	Fat	Protein
+1581 kg	-0.09 %	-0.06 %
	+52 kg	+47 kg
Reliability	74 %	
Daughters	-	
Herds	-	

	76	88	100	112	124		
Dairy type						110	
Body						98	
Feet & Legs						105	
Udder						122	
Stature	small					113	tall
Rib Structure	flat					101	arched
Body depth	shallow					97	deep
Strength	narrow					92	wide
Rump angle	ascending					112	sloped
Rump width	narrow					106	wide
Rear leg angle	straight					90	sickled
Foot angle	low angle					112	steep angle
Hocks	swollen					102	clean
Rear leg set r.v.	toes out					96	parallel
Front Feet Orientation	outward					94	straight
Locomotion	bad					103	good
Rear udder h.	low					118	high
Suspens. lig.	weak					107	strong
Teat placem.f.	wide					95	close
Teat placem.r.	wide					96	close
Fore udder att.	loose					119	tight
Udder Balance	rear deep					90	front deep
Udder depth	deep					120	shallow
Teat length	short					104	long

Proof: VIT / 04-2023

Daughters/Herds: -/-

Skinner RDC

RDC
823255 born: 04.09.2019
 HOLDEUM000361971737
 aAa 342516



♂ **Starello** (♂ Styx Red)
 ♀ MAR Illusion GP 84 (♂ Mission P)
 3/2 12111 3.96 479 3.54 429
 ♀ KHE Indiana Mr EX 90 (♂ Icone)
 5/4 13735 4.41 606 3.41 468
 ♀ KHE Israel VG 88 (♂ Shotglass)



genomic
 HOLSTEIN

RZG 142 83 %	RZ€ 1798 85 %	RZM 130 76 %	RZE 109 74 %	RZS 120 78 %	RZN 123 69 %	RZR 112 58 %	RZKd 93 88 %	RZKm 106 66 %	RZD 87 77 %
---------------------------	----------------------------	---------------------------	---------------------------	---------------------------	---------------------------	---------------------------	---------------------------	----------------------------	--------------------------

RZ health	124	76 %
RZ udderfit	117	66 %
RZ hoof	111	59 %
RZ metabol	108	62 %
RZ repro	108	59 %
RZ calfhealth	94	71 %
DDcontrol	115	58 %

RZRobot	---	-- %
RZpersistence	109	66 %
Cappa-Casein	BB	
Beta-Casein	A2A2	
Milk	Fat	Protein
+1133 kg	+0.03 %	+0.00 %
	+48 kg	+38 kg
Reliability	76 %	
Daughters	-	
Herds	-	

	76	88	100	112	124	
Dairy type						100
Body						85
Feet & Legs						117
Udder						108
Stature	small					89 tall
Rib Structure	flat					103 arched
Body depth	shallow					85 deep
Strength	narrow					92 wide
Rump angle	ascending					97 sloped
Rump width	narrow					89 wide
Rear leg angle	straight					102 sickled
Foot angle	low angle					99 steep angle
Hocks	swollen					115 clean
Rear leg set r.v.	toes out					108 parallel
Front Feet Orientation	outward					107 straight
Locomotion	bad					113 good
Rear udder h.	low					106 high
Suspens. lig.	weak					92 strong
Teat placem.f.	wide					112 close
Teat placem.r.	wide					105 close
Fore udder att.	loose					109 tight
Udder Balance	rear deep					92 front deep
Udder depth	deep					105 shallow
Teat length	short					97 long

- Functionality
- Milk production
- Improves health

Proof: VIT / 04-2023

Daughters/Herds: -/-

Systole

KHE Systole
823212 born: 06.07.2017
 HOLDEUM001504401583
 aAa 432156



♂ **Superhero** (♂ Supershot)
 ♀ KHE Insa VG 85 (♂ Icone)
 100 T. 2773 3.61 100 2.96 82
 ♀ KHE Israel VG 88 (♂ Shotglass)
 3/3 10779 3.70 399 3.27 353
 ♀ KHE India VG 88 (♂ Windbrook)



progeny tested
 HOLSTEIN

RZG 141 97 %	RZ€ 1756 97 %	RZM 130 99 %	RZE 112 98 %	RZS 120 99 %	RZN 135 86 %	RZR 118 85 %	RZKd 110 97 %	RZKm 114 97 %	RZD 97 97 %
---------------------------	----------------------------	---------------------------	---------------------------	---------------------------	---------------------------	---------------------------	----------------------------	----------------------------	--------------------------

RZ health	114	93 %
RZ udderfit	107	90 %
RZ hoof	114	86 %
RZ metabol	104	87 %
RZ repro	108	84 %
RZ calfhealth	95	94 %
DDcontrol	111	88 %

RZRobot	122	98 %
RZpersistence	110	88 %
Cappa-Casein	AB	
Beta-Casein	A2A2	
Milk	Fat	Protein
+1055 kg	-0.04 %	+0.07 %
	+37 kg	+44 kg
Reliability	99 %	
Daughters	1900	
Herds	361	

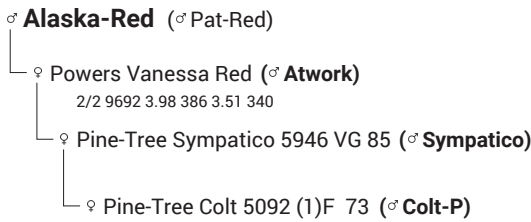
	76	88	100	112	124	
Dairy type						111
Body						96
Feet & Legs						113
Udder						108
Stature	small					103 tall
Rib Structure	flat					101 arched
Body depth	shallow					103 deep
Strength	narrow					95 wide
Rump angle	ascending					79 sloped
Rump width	narrow					100 wide
Rear leg angle	straight					114 sickled
Foot angle	low angle					85 steep angle
Hocks	swollen					113 clean
Rear leg set r.v.	toes out					111 parallel
Front Feet Orientation	outward					110 straight
Locomotion	bad					115 good
Rear udder h.	low					116 high
Suspens. lig.	weak					103 strong
Teat placem.f.	wide					98 close
Teat placem.r.	wide					87 close
Fore udder att.	loose					98 tight
Udder Balance	rear deep					101 front deep
Udder depth	deep					101 shallow
Teat length	short					105 long

- Udder health
- Longevity
- Hoof health

Proof: VIT / 04-2023

Daughters/Herds: 655/92

Albada Red



157712 born: 17.05.2018
 HOLNLDM000686833943
aAa 234156



Albada Red

RZG	RZ€	RZM	RZE	RZS	RZN	RZR	RZKd	RZKm	RZD
135	1419	119	119	117	121	110	114	104	103
82 %	84 %	75 %	73 %	77 %	69 %	57 %	80 %	65 %	77 %

RZ health	120	73 %
RZ udderfit	109	64 %
RZ hoof	110	55 %
RZ metabol	112	58 %
RZ repro	108	56 %
RZ calfhealth	96	65 %
DDcontrol	111	54 %

RZRobot	---	-- %
RZpersistence	94	64 %
Cappa-Casein	AA	
Beta-Casein	A2A3	
Milk	Fat	Protein
+883 kg	-0.13 %	-0.04 %
	+23 kg	+27 kg
Reliability	75 %	
Daughters	-	
Herds	-	

	76	88	100	112	124		
Dairy type						117	
Body						105	
Feet & Legs						104	
Udder						116	
Stature	small					107	tall
Rib Structure	flat					106	arched
Body depth	shallow					102	deep
Strength	narrow					101	wide
Rump angle	ascending					100	sloped
Rump width	narrow					100	wide
Rear leg angle	straight					102	sickled
Foot angle	low angle					94	steep angle
Hocks	swollen					97	clean
Rear leg set r.v.	toes out					106	parallel
Front Feet Orientation	outward					107	straight
Locomotion	bad					107	good
Rear udder h.	low					112	high
Suspens. lig.	weak					94	strong
Teat placem.f.	wide					112	close
Teat placem.r.	wide					110	close
Fore udder att.	loose					114	tight
Udder Balance	rear deep					111	front deep
Udder depth	deep					112	shallow
Teat length	short					101	long

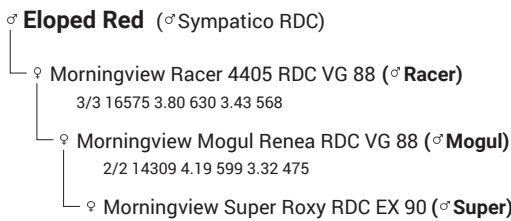
- Longevity
- Improve health
- Conformation

Proof: VIT / 04-2023

Daughters/Herds: -/-

El Toro

Mornigview RUW El Toro



917594 born: 25.03.2017
 HOLDEUM000770417244
aAa 423516



Trixi

RZG	RZ€	RZM	RZE	RZS	RZN	RZR	RZKd	RZKm	RZD
138	1553	150	106	107	109	100	114	104	102
95 %	95 %	98 %	94 %	97 %	84 %	81 %	93 %	93 %	92 %

RZ health	105	83 %
RZ udderfit	96	76 %
RZ hoof	111	69 %
RZ metabol	103	71 %
RZ repro	104	66 %
RZ calfhealth	84	85 %
DDcontrol	119	71 %

RZRobot	---	-- %
RZpersistence	110	87 %
Cappa-Casein	BB	
Beta-Casein	A1A1	
Milk	Fat	Protein
+2366 kg	-0.30 %	-0.08 %
	+62 kg	+72 kg
Reliability	98 %	
Daughters	789	
Herds	384	

	76	88	100	112	124		
Dairy type						103	
Body						92	
Feet & Legs						97	
Udder						114	
Stature	small					102	tall
Rib Structure	flat					102	arched
Body depth	shallow					90	deep
Strength	narrow					95	wide
Rump angle	ascending					117	sloped
Rump width	narrow					95	wide
Rear leg angle	straight					110	sickled
Foot angle	low angle					90	steep angle
Hocks	swollen					101	clean
Rear leg set r.v.	toes out					104	parallel
Front Feet Orientation	outward					108	straight
Locomotion	bad					99	good
Rear udder h.	low					118	high
Suspens. lig.	weak					92	strong
Teat placem.f.	wide					132	close
Teat placem.r.	wide					122	close
Fore udder att.	loose					112	tight
Udder Balance	rear deep					93	front deep
Udder depth	deep					111	shallow
Teat length	short					101	long

- Milk
- Type
- Milking speed

Proof: VIT / 04-2023

Daughters/Herds: 234/121

Miracle PP

Waldclass Miracle PP

PP*

917632 born: 22.03.2019

HOLNLDM000564906990

aAa 243156



♂ My Dream P RDC (♂ Mission P RDC)

♀ NH Mission P VG 85 (♂ Styx Red)

3/2 9976 3.77 376 3.28 327

♀ Merle PP VG 88 (♂ Capple P)

3/3 14216 3.72 529 3.45 490

♀ Maya P VG 86 (♂ Asterix P)



Miracle PP

genomic

RED HOLSTEIN

RZG 133 83 %	RZ€ 1261 85 %	RZM 116 75 %	RZE 118 73 %	RZS 111 77 %	RZN 117 69 %	RZR 101 58 %	RZKd 116 95 %	RZKm 106 65 %	RZD 97 77 %
----------------------------------	-----------------------------------	----------------------------------	----------------------------------	----------------------------------	----------------------------------	----------------------------------	-----------------------------------	-----------------------------------	---------------------------------

RZ health	120	75 %
RZ udderfit	113	66 %
RZ hoof	117	58 %
RZ metabol	104	61 %
RZ repro	102	58 %
RZ calfhealth	118	87 %
DDcontrol	120	57 %

RZRobot	116	74 %
RZpersistence	106	65 %
Cappa-Casein	BB	
Beta-Casein	A1A2	
Milk	Fat	Protein
+739 kg	-0.20 %	+0.03 %
	+10 kg	+29 kg
Reliability	75 %	
Daughters	-	
Herds	-	

	76	88	100	112	124		
Dairy type						106	
Body						91	
Feet & Legs						112	
Udder						119	
Stature	small					101	tall
Rib Structure	flat					100	arched
Body depth	shallow					90	deep
Strength	narrow					91	wide
Rump angle	ascending					92	sloped
Rump width	narrow					91	wide
Rear leg angle	straight					99	sickled
Foot angle	low angle					101	steep angle
Hocks	swollen					109	clean
Rear leg set r.v.	toes out					106	parallel
Front Feet Orientation	outward					103	straight
Locomotion	bad					108	good
Rear udder h.	low					112	high
Suspens. lig.	weak					100	strong
Teat placem.f.	wide					100	close
Teat placem.r.	wide					98	close
Fore udder att.	loose					117	tight
Udder Balance	rear deep					114	front deep
Udder depth	deep					118	shallow
Teat length	short					106	long

- Conformation
- Improve health
- Udder

Proof: VIT / 04-2023

Daughters/Herds: -/-

Performer

Warner Holsteins PERFORMER

917665 born: 22.12.2019

HOLDEUM000541194964

aAa 342516



♂ Paladin (♂ Pace Red)

♀ Westcoast RUW Beauty RDC VG 86 (♂ Mega Watt RDC)

3/3 11839 5.14 609 3.72 441

♀ MS DG-TM PB Brynlee RDC GP 80 (♂ Powerball P)

2/1 11980 3.71 444 3.21 384

♀ Calbrett Ssire Barb RDC VG 86 (♂ Supersire)



Performer

genomic

RED HOLSTEIN

RZG 145 81 %	RZ€ 2083 83 %	RZM 127 75 %	RZE 102 71 %	RZS 121 76 %	RZN 129 67 %	RZR 108 53 %	RZKd 108 67 %	RZKm 108 62 %	RZD 97 76 %
----------------------------------	-----------------------------------	----------------------------------	----------------------------------	----------------------------------	----------------------------------	----------------------------------	-----------------------------------	-----------------------------------	---------------------------------

RZ health	128	71 %
RZ udderfit	116	61 %
RZ hoof	112	52 %
RZ metabol	111	56 %
RZ repro	111	53 %
RZ calfhealth	119	48 %
DDcontrol	99	52 %

RZRobot	105	73 %
RZpersistence	103	62 %
Cappa-Casein	BB	
Beta-Casein	A1A2	
Milk	Fat	Protein
+1185 kg	+0.00 %	-0.09 %
	+49 kg	+31 kg
Reliability	75 %	
Daughters	-	
Herds	-	

	76	88	100	112	124		
Dairy type						96	
Body						96	
Feet & Legs						105	
Udder						103	
Stature	small					97	tall
Rib Structure	flat					100	arched
Body depth	shallow					101	deep
Strength	narrow					102	wide
Rump angle	ascending					82	sloped
Rump width	narrow					89	wide
Rear leg angle	straight					98	sickled
Foot angle	low angle					105	steep angle
Hocks	swollen					106	clean
Rear leg set r.v.	toes out					94	parallel
Front Feet Orientation	outward					100	straight
Locomotion	bad					103	good
Rear udder h.	low					98	high
Suspens. lig.	weak					113	strong
Teat placem.f.	wide					98	close
Teat placem.r.	wide					105	close
Fore udder att.	loose					103	tight
Udder Balance	rear deep					101	front deep
Udder depth	deep					102	shallow
Teat length	short					97	long

- Improve health
- Longevity
- Calf health

Proof: VIT / 04-2023

Daughters/Herds: -/-

Rambo PP

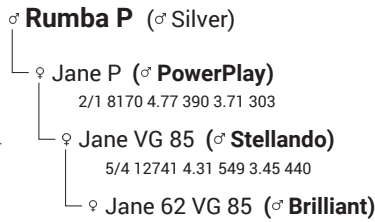
GROENIBO RAMBO PP

PP*

587537 born: 13.11.2017

HOLNLDM000687404238

aAa 432516



Zecke

RZG	RZ€	RZM	RZE	RZS	RZN	RZR	RZKd	RZKm	RZD
126	1029	125	110	111	108	101	112	103	93
95 %	95 %	99 %	94 %	98 %	81 %	84 %	99 %	96 %	96 %

RZ health	105	80 %
RZ udderfit	104	73 %
RZ hoof	95	57 %
RZ metabol	107	73 %
RZ repro	103	60 %
RZ calfhealth	109	97 %
DDcontrol	91	57 %

RZRobot	---	---
RZpersistence	111	82 %
Cappa-Casein	AB	
Beta-Casein	A2A2	
Milk	Fat	Protein
+586 kg	+0.12 %	+0.14 %
	+36 kg	+34 kg
Reliability	99 %	
Daughters	1392	
Herds	515	

	76	88	100	112	124		
Dairy type						99	
Body						101	
Feet & Legs						103	
Udder						113	
Stature	small					107	tall
Rib Structure	flat					105	arched
Body depth	shallow					101	deep
Strength	narrow					105	wide
Rump angle	ascending					115	sloped
Rump width	narrow					95	wide
Rear leg angle	straight					102	sickled
Foot angle	low angle					106	steep angle
Hocks	swollen					94	clean
Rear leg set r.v.	toes out					105	parallel
Front Feet Orientation	outward					97	straight
Locomotion	bad					103	good
Rear udder h.	low					109	high
Suspens. lig.	weak					103	strong
Teat placem.f.	wide					96	close
Teat placem.r.	wide					107	close
Fore udder att.	loose					109	tight
Udder Balance	rear deep					106	front deep
Udder depth	deep					112	shallow
Teat length	short					112	long

- Calving ease
- Fits for AMS
- A2A2

Proof: VIT / 04-2023

Daughters/Herds: 286/134

Solitair P

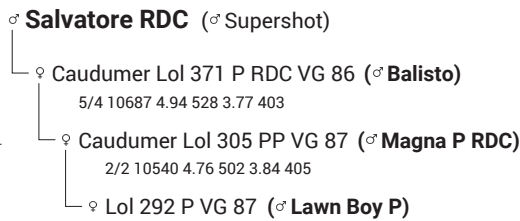
Caudumer Solitair P

Pp*

917617 born: 03.01.2018

HOLNLDM000576852597

aAa 423516



Dreamgirl

RZG	RZ€	RZM	RZE	RZS	RZN	RZR	RZKd	RZKm	RZD
143	1834	136	117	116	131	100	118	103	106
96 %	95 %	99 %	97 %	97 %	82 %	83 %	99 %	95 %	96 %

RZ health	109	86 %
RZ udderfit	105	81 %
RZ hoof	107	71 %
RZ metabol	103	79 %
RZ repro	106	72 %
RZ calfhealth	108	97 %
DDcontrol	108	73 %

RZRobot	---	---
RZpersistence	119	85 %
Cappa-Casein	BB	
Beta-Casein	A1A2	
Milk	Fat	Protein
+1082 kg	+0.11 %	+0.09 %
	+56 kg	+47 kg
Reliability	99 %	
Daughters	1168	
Herds	583	

	76	88	100	112	124		
Dairy type						123	
Body						92	
Feet & Legs						115	
Udder						113	
Stature	small					95	tall
Rib Structure	flat					107	arched
Body depth	shallow					86	deep
Strength	narrow					82	wide
Rump angle	ascending					97	sloped
Rump width	narrow					107	wide
Rear leg angle	straight					103	sickled
Foot angle	low angle					99	steep angle
Hocks	swollen					115	clean
Rear leg set r.v.	toes out					104	parallel
Front Feet Orientation	outward					103	straight
Locomotion	bad					111	good
Rear udder h.	low					120	high
Suspens. lig.	weak					102	strong
Teat placem.f.	wide					105	close
Teat placem.r.	wide					109	close
Fore udder att.	loose					106	tight
Udder Balance	rear deep					107	front deep
Udder depth	deep					110	shallow
Teat length	short					90	long

Proof: VIT / 04-2023

Daughters/Herds: 659/320

Hegel

866073

Born: 28.12.2019
DE 09 55445139
aAa 564132



♂ HERKULES (♂ HERZSCHLAG), (♀ AMELIE)

♀ FRISKA (♂ SISYPHUS)

4/3 7808 5.42 423 3.65 285

♀ FANILLE (♂ HUTERA)

6/6 9682 4.80 465 3.47 336



Hegel

genomic

FLECKVIEH - SIMMENTAL

gTMI 131 79%
Components **Milking speed** **Udder**

Milk	MI 122 87%	Beef Performance	BI 113 76%	Fitness	FIT 112 83%	Type traits	- Daughters
Milk +643 kg	Fat +0.15 % +40 kg	Protein +0.02 % +25 kg	Daily net gain 117 77%	Longevity 100 72%	Udder health 104 84%	Calving ease pat. 103 98%	Calving ease mat. 103 83%
Daughters Herds	Cappa-Casein AB	Beta-Casein A2A2	Carcass percentage 106 77%	Prod. increase 96 75%	Persistence 94 80%	Som. cell count 105 80%	Fertility mat. 122 72%
			Carcass grade 108 75%	Milking speed 120 86%	Vitality 104 90%	Ecol. TMI 123 85%	

Trait	76	88	100	112	124
Frame					106
Muscling					99
Feet & Legs					100
Udder					120
Height at cross	small				107 large
Body length	short				106 long
Rump width	narrow				103 wide
Body depth	shallow				102 deep
Rump angle	ascending				108 sloped
Hock angularity	straight				105 sickled
Hock develop.	swollen				100 dry
Pasterns	weak				94 strong
Foot angle	low angles				107 steep angles
Fore udder length	short				114 long
Rear udder length	short				100 long
Fore udder att.	loose				110 tight
Susp. ligament	weak				106 strong
Udder depth	deep				113 high
Teat length	short				91 long
Teat thickness	thin				94 thick
Teat placem. (front)	wide				109 close
Teat placem. (rear)	wide				112 close
Teat direction (rear)	outwards				119 inwards
Udder cleanness	add. teats				100 clean udder

Proof: ZAR / 04-2023

HugoBoss

606193 Pigm.: 45%

Born: 19.02.2015
AT 62 9905 428
aAa 342561



♂ HUTERA (♂ HUTMANN), (♀ WANDERA)

♀ ERLE 1.87-83-90-88 K1 50 (♂ WILLE)

8/8 9389 4.56 428 3.39 318

♀ ERLE (♂ ROSSI)

3/3 7865 4.23 332 3.12 245



HugoBoss

progeny tested

FLECKVIEH - SIMMENTAL

gTMI 114 98%
Feet & Legs **Milking speed** **Milk**

Milk	MI 118 99%	Beef Performance	BI 96 99%	Fitness	FIT 98 99%	Type traits	747 Daughters
Milk +902 kg	Fat -0.04 % +34 kg	Protein -0.14 % +19 kg	Daily net gain 87 99%	Longevity 101 97%	Udder health 101 99%	Calving ease pat. 100 99%	Calving ease mat. 95 99%
Daughters Herds 2248 1224	Cappa-Casein AA	Beta-Casein A1A2	Carcass percentage 101 99%	Prod. increase 98 99%	Persistence 108 99%	Som. cell count 102 99%	Fertility mat. 93 98%
			Carcass grade 99 99%	Milking speed 115 99%	Vitality 98 98%	Ecol. TMI 110 99%	

Trait	76	88	100	112	124
Frame					96
Muscling					96
Feet & Legs					120
Udder					105
Height at cross	small				96 large
Body length	short				93 long
Rump width	narrow				94 wide
Body depth	shallow				103 deep
Rump angle	ascending				107 sloped
Hock angularity	straight				90 sickled
Hock develop.	swollen				101 dry
Pasterns	weak				121 strong
Foot angle	low angles				108 steep angles
Fore udder length	short				107 long
Rear udder length	short				110 long
Fore udder att.	loose				86 tight
Susp. ligament	weak				109 strong
Udder depth	deep				98 high
Teat length	short				88 long
Teat thickness	thin				98 thick
Teat placem. (front)	wide				107 close
Teat placem. (rear)	wide				107 close
Teat direction (rear)	outwards				108 inwards
Udder cleanness	add. teats				107 clean udder

Ami, daughter of Hugoboss

Proof: ZAR / 04-2023

Humbold

186960 Pigm.: 16%

Born: 20.05.2015
DE 09 50054104



♂ **HUTERA** (♂ HUTMANN), (♀ WANDERA)
 ♀ **MEIKA** (♂ VANADIN)
 6/5 9134 3.61 329 3.43 313
 ♀ **MAIKE** (♂ RIESLING)
 7/7 10711 4.01 430 3.64 390



Humbold

gTMI
123
92%

Milk-kg

Frame

Muscling

Milk			MI 126 97%		Beef Performance		BI 103 93%		Fitness		FIT 99 91%		Type traits		74 Daughters				
Milk	Fat	Protein	Daily net gain					Longevity						Trait					
+1212 kg	-0.15 %	-0.05 %	108	94%				Udder health	99	83%				76	88	100	112	124	
	+37 kg	+38 kg						Calving ease pat.	104	94%									
Daughters	139		Carcass percentage	98	86%			Calving ease mat.	98	97%									
Herds	110		Carcass grade	103	93%			Prod. increase	99	91%									
Cappa-Casein	AA							Persistency	109	94%									
Beta-Casein	-							Som. cell count	108	94%									
								Fertility mat.	96	85%									
								Milking speed	84	94%									
								Vitality	98	88%									
								Ecol. TMI	114	94%									

Proof: ZAR / 04-2023

Hurly

177400 Pigm.: 48%

Born: 07.08.2012
DE 09 47424346
aAa 426531



♂ **HULKOR** (♂ HULOCK), (♀ KORALLE)
 ♀ **AFRA** (♂ SEGO)
 7/6 9562 3.93 376 3.56 340
 ♀ **AMANDA** (♂ HIPPO)
 8/8 8703 4.11 358 3.45 301



Hurly

gTMI
123
99%

Dual purpose

Udder

Calving ease

Milk			MI 110 99%		Beef Performance		BI 114 99%		Fitness		FIT 111 99%		Type traits		2830 Daughters				
Milk	Fat	Protein	Daily net gain					Longevity						Trait					
+711 kg	-0.26 %	-0.06 %	107	99%				Udder health	110	99%				76	88	100	112	124	
	+7 kg	+20 kg						Calving ease pat.	106	99%									
Daughters	15398		Carcass percentage	118	99%			Calving ease mat.	112	99%									
Herds	6394		Carcass grade	104	99%			Prod. increase	101	99%									
Cappa-Casein	AA							Persistency	86	99%									
Beta-Casein	A2A2							Som. cell count	100	99%									
								Fertility mat.	104	99%									
								Milking speed	107	99%									
								Vitality	81	99%									
								Ecol. TMI	112	99%									
									117	99%									



Glitzer, daughter of Hurly, 2nd lac.

Proof: ZAR / 04-2023

Mirolo

427007 Pigm.: 57%

Born: 15.05.2015
DE 08 15987833
aAa 342156



♂ MINT (♂ MANIGO), (♀ INKA)
♀ IDA (♂ RENWART)
5/4 8757 4.12 361 3.45 302
♀ IMELDA (♂ HUPSOL)
6/6 10902 3.86 421 3.29 359



progeny tested

FLECKVIEH – SIMMENTAL

gTMI 118 96%

Type **Udder health** **Fertility**

Milk	MI 112 99%	Beef Performance	BI 100 96%	Fitness	FIT 110 96%	Type traits	249 Daughters
Milk +611 kg	Fat -0.12 % Protein -0.01 % +15 kg +20 kg	Daily net gain 104 99%	Carcass percentage 104 86%	Longevity 105 91%	Udder health 110 97%	Frame	76 88 100 112 124 111
Daughters 592	Herds 288	Carcass grade 92 98%	Calving ease pat. 93 99%	Calving ease mat. 104 96%	Prod. increase 93 98%	Muscling	102
Cappa-Casein AB	Beta-Casein A2A2	Calving ease mat. 104 96%	Prod. increase 93 98%	Persistence 86 99%	Som. cell count 109 98%	Feet & Legs	110
<p>Galilei, daughter of Mirolo</p>		Calving ease mat. 104 96%	Prod. increase 93 98%	Persistence 86 99%	Som. cell count 109 98%	Udder	111
		Fertility mat. 114 94%	Milking speed 94 98%	Vitality 95 94%	Ecol. TMI 110 97%	Height at cross	small 113 large
		Body length	short 108 long	Rump width	narrow 102 wide	Body depth	shallow 108 deep
		Rump angle	ascending 95 sloped	Hock angularity	straight 106 sickled	Hock develop.	swollen 115 dry
		Pasterns	weak 98 strong	Foot angle	low angles 91 steep angles	Fore udder length	short 112 long
<p>Monumental</p>		Carcass percentage 104 86%	Calving ease pat. 93 99%	Calving ease mat. 104 96%	Prod. increase 93 98%	Rear udder length	short 110 long
		Carcass grade 92 98%	Calving ease mat. 104 96%	Prod. increase 93 98%	Som. cell count 109 98%	Fore udder att.	loose 99 tight
		Udder depth	deep 106 high	Teat length	short 94 long	Susp. ligament	weak 110 strong
		Teat thickness	thin 87 thick	Teat placem. (front)	wide 110 close	Udder depth	deep 106 high
		Teat placem. (rear)	wide 118 close	Teat direction (rear)	outwards 106 inwards	Teat thickness	thin 104 long
<p>Lia, daughter of Monumental</p>		Calving ease mat. 104 96%	Prod. increase 93 98%	Persistence 86 99%	Som. cell count 109 98%	Teat thickness	thin 104 thick
		Fertility mat. 114 94%	Milking speed 94 98%	Vitality 95 94%	Ecol. TMI 110 97%	Teat placem. (front)	wide 105 close
		Body length	short 108 long	Rump width	narrow 102 wide	Teat placem. (rear)	wide 118 close
		Rump angle	ascending 95 sloped	Hock angularity	straight 106 sickled	Teat direction (rear)	outwards 118 inwards
		Pasterns	weak 98 strong	Foot angle	low angles 91 steep angles	Udder cleanliness	add. teats 104 clean udder

Proof: ZAR / 04-2023

Monumental

171790 Pigm.: 51%

Born: 29.10.2014
DE 09 49729097
aAa 456321



♂ MANIGO (♂ MANDELA), (♀ NITTI)
♀ LENTA (♂ HULKOR)
4/3 8714 3.81 332 3.62 316
♀ LENI (♂ VANSTEIN)
5/5 9700 4.18 405 3.89 378



progeny tested

FLECKVIEH – SIMMENTAL

gTMI 110 99%

Fitness **Udder** **Feet & Legs**

Milk	MI 106 99%	Beef Performance	BI 96 99%	Fitness	FIT 108 99%	Type traits	1647 Daughters
Milk +566 kg	Fat -0.43 % Protein +0.05 % -14 kg +24 kg	Daily net gain 100 99%	Carcass percentage 93 99%	Longevity 116 99%	Udder health 109 99%	Frame	76 88 100 112 124 91
Daughters 7050	Herds 3491	Carcass grade 98 99%	Calving ease pat. 107 99%	Calving ease mat. 107 99%	Prod. increase 107 99%	Muscling	124
Cappa-Casein AA	Beta-Casein A2A2	Calving ease mat. 107 99%	Prod. increase 107 99%	Persistence 108 99%	Som. cell count 111 99%	Feet & Legs	113
<p>Lia, daughter of Monumental</p>		Calving ease mat. 107 99%	Prod. increase 107 99%	Persistence 108 99%	Som. cell count 111 99%	Udder	113
		Fertility mat. 95 99%	Milking speed 105 99%	Vitality 104 99%	Ecol. TMI 115 99%	Height at cross	small 92 large
		Body length	short 94 long	Rump width	narrow 90 wide	Body depth	shallow 92 deep
		Rump angle	ascending 90 sloped	Hock angularity	straight 97 sickled	Hock develop.	swollen 114 dry
		Pasterns	weak 109 strong	Foot angle	low angles 115 steep angles	Fore udder length	short 112 long
<p>Monumental</p>		Carcass percentage 93 99%	Calving ease pat. 107 99%	Calving ease mat. 107 99%	Prod. increase 107 99%	Rear udder length	short 109 long
		Carcass grade 98 99%	Calving ease mat. 107 99%	Prod. increase 107 99%	Som. cell count 111 99%	Fore udder att.	loose 102 tight
		Udder depth	deep 106 high	Teat length	short 104 long	Susp. ligament	weak 115 strong
		Teat thickness	thin 104 thick	Teat placem. (front)	wide 105 close	Udder depth	deep 106 high
		Teat placem. (rear)	wide 118 close	Teat direction (rear)	outwards 118 inwards	Teat thickness	thin 104 long
<p>Lia, daughter of Monumental</p>		Calving ease mat. 107 99%	Prod. increase 107 99%	Persistence 108 99%	Som. cell count 111 99%	Teat thickness	thin 104 thick
		Fertility mat. 95 99%	Milking speed 105 99%	Vitality 104 99%	Ecol. TMI 115 99%	Teat placem. (front)	wide 105 close
		Body length	short 94 long	Rump width	narrow 90 wide	Teat placem. (rear)	wide 118 close
		Rump angle	ascending 90 sloped	Hock angularity	straight 97 sickled	Teat direction (rear)	outwards 118 inwards
		Pasterns	weak 109 strong	Foot angle	low angles 115 steep angles	Udder cleanliness	add. teats 106 clean udder

Proof: ZAR / 04-2023

Weitblick

860110 Pigm.: 32%

Born: 05.07.2017
DE 09 45642290
aAa 423561



♂ **WOBBLER** (♂ WATNOX), (♀ SINDI)

♀ LANESSA (♂ REUMUT)

4/4 11974 3.52 422 3.59 430

♀ LARISA (♂ ROUND UP)

4/4 10056 3.99 402 3.53 355



Weitblick

gTMI
133
97%

Milk

Beef

Fitness

Milk			Beef Performance			Fitness			Type traits						
MI 117 99%			BI 115 99%			FIT 115 97%			430 Daughters						
Milk +828 kg	Fat -0.15 %	Protein -0.03 %	Daily net gain	103	99%	Longevity	118	92%	Trait						
	+21 kg	+27 kg				Udder health	106	98%	76	88	100	112	124		
Daughters Herds	1926	965	Carcass percentage	119	99%	Calving ease pat.	103	99%	Frame					94	
Cappa-Casein	AA		Carcass grade	109	99%	Calving ease mat.	110	98%	Muscling					91	
Beta-Casein	A1A2					Prod. increase	105	87%	Feet & Legs					112	
						Persistency	113	99%	Udder					101	
						Som. cell count	106	99%	Height at cross	small				96	large
						Fertility mat.	109	94%	Body length	short				97	long
						Milking speed	103	99%	Rump width	narrow				93	wide
						Vitality	99	98%	Body depth	shallow				89	deep
						Ecol. TMI	131	97%	Rump angle	ascending				108	sloped
									Hock angularity	straight				106	sickled
									Hock develop.	swollen				105	dry
									Pasterns	weak				101	strong
									Foot angle	low angles				107	steep angles
									Fore udder length	short				98	long
									Rear udder length	short				106	long
									Fore udder att.	loose				91	tight
									Susp. ligament	weak				101	strong
									Udder depth	deep				95	high
									Teat length	short				99	long
									Teat thickness	thin				106	thick
									Teat placem. (front)	wide				107	close
									Teat placem. (rear)	wide				100	close
									Teat direction (rear)	outwards				102	inwards
									Udder cleanliness	add. teats				105	clean udder

Proof: ZAR / 04-2023



Luca Noll

Garniera, daughter of Weitblick

Antonius

346900

Born: 28.10.2019
DE 09 55057978



♂ Ag Angelo (♂ Anibal), (♀ Presly)

♀ Fips (♂ Ag Juventus)

7/6 9030 4.45 402 3.69 333

♀ Fete (♂ Huray)

4/4 10715 3.89 416 3.44 369



Antonius

genomic

BROWN SWISS

gTMI 126 75%

Milk **Fitness** **Teat placement**

Milk	MI 117 83%	Beef Performance	BI 90 61%	Fitness	FIT 110 76%	Type traits	- Daughters																																																																																																																																																																																																																																		
Milk +966 kg	Fat -0.16 % Protein -0.14 % +26 kg +22 kg	Daily net gain 96 63%	Carcass percentage 91 58%	Carcass grade 89 57%	Longevity 113 64%	Udder health 102 77%	Calving ease pat. 104 93%	Calving ease mat. 108 74%	Prod. increase 113 67%	Persistence 114 74%	Som. cell count 102 74%	Fertility mat. 104 62%	Milking speed 120 78%	Vitality 91 82%	Ecol. TMI 121 80%																																																																																																																																																																																																																										
Daughters Herds	Cappa-Casein AB Beta-Casein A2A2	<table border="1"> <thead> <tr> <th>Trait</th> <th>76</th> <th>88</th> <th>100</th> <th>112</th> <th>124</th> </tr> </thead> <tbody> <tr><td>Frame</td><td></td><td></td><td></td><td></td><td>106</td></tr> <tr><td>Rump</td><td></td><td></td><td></td><td></td><td>93</td></tr> <tr><td>Feet & Legs</td><td></td><td></td><td></td><td></td><td>105</td></tr> <tr><td>Udder</td><td></td><td></td><td></td><td></td><td>100</td></tr> <tr><td>Final Score</td><td></td><td></td><td></td><td></td><td>101</td></tr> <tr><td>Muscling</td><td>light</td><td></td><td></td><td></td><td>93</td><td>heavy</td></tr> <tr><td>Height at cross</td><td>small</td><td></td><td></td><td></td><td>110</td><td>large</td></tr> <tr><td>Chest width</td><td>shallow</td><td></td><td></td><td></td><td>99</td><td>deep</td></tr> <tr><td>Body depth</td><td>shallow</td><td></td><td></td><td></td><td>106</td><td>deep</td></tr> <tr><td>Backline</td><td>weak</td><td></td><td></td><td></td><td>99</td><td>strong</td></tr> <tr><td>Rump length</td><td>short</td><td></td><td></td><td></td><td>103</td><td>long</td></tr> <tr><td>Rump width</td><td>narrow</td><td></td><td></td><td></td><td>93</td><td>wide</td></tr> <tr><td>Rump angle</td><td>ascending</td><td></td><td></td><td></td><td>99</td><td>sloped</td></tr> <tr><td>Thurl position</td><td>in the back</td><td></td><td></td><td></td><td>92</td><td>in the centre</td></tr> <tr><td>Hock angularity</td><td>straight</td><td></td><td></td><td></td><td>94</td><td>sickled</td></tr> <tr><td>Hock develop.</td><td>swollen</td><td></td><td></td><td></td><td>105</td><td>dry</td></tr> <tr><td>Pasterns</td><td>weak</td><td></td><td></td><td></td><td>93</td><td>strong</td></tr> <tr><td>Foot angle</td><td>low angles</td><td></td><td></td><td></td><td>100</td><td>steep angles</td></tr> <tr><td>Fore udder length</td><td>short</td><td></td><td></td><td></td><td>107</td><td>long</td></tr> <tr><td>Rear udder width</td><td>narrow</td><td></td><td></td><td></td><td>96</td><td>wide</td></tr> <tr><td>Rear udder height</td><td>low</td><td></td><td></td><td></td><td>100</td><td>high</td></tr> <tr><td>Susp. ligament</td><td>weak</td><td></td><td></td><td></td><td>101</td><td>strong</td></tr> <tr><td>Udder depth</td><td>deep</td><td></td><td></td><td></td><td>91</td><td>shallow</td></tr> <tr><td>Fore udder att.</td><td>loose</td><td></td><td></td><td></td><td>95</td><td>tight</td></tr> <tr><td>Udder balance</td><td>staged</td><td></td><td></td><td></td><td>99</td><td>inclined</td></tr> <tr><td>Teat length</td><td>short</td><td></td><td></td><td></td><td>96</td><td>long</td></tr> <tr><td>Teat thickness</td><td>thin</td><td></td><td></td><td></td><td>108</td><td>thick</td></tr> <tr><td>Teat placem. (front)</td><td>wide</td><td></td><td></td><td></td><td>117</td><td>close</td></tr> <tr><td>Teat placem. (rear)</td><td>wide</td><td></td><td></td><td></td><td>103</td><td>close</td></tr> <tr><td>Teat direction (rear)</td><td>outwards</td><td></td><td></td><td></td><td>102</td><td>inwards</td></tr> <tr><td>Udder cleanness</td><td>add. teats</td><td></td><td></td><td></td><td>104</td><td>clean udder</td></tr> </tbody> </table>														Trait	76	88	100	112	124	Frame					106	Rump					93	Feet & Legs					105	Udder					100	Final Score					101	Muscling	light				93	heavy	Height at cross	small				110	large	Chest width	shallow				99	deep	Body depth	shallow				106	deep	Backline	weak				99	strong	Rump length	short				103	long	Rump width	narrow				93	wide	Rump angle	ascending				99	sloped	Thurl position	in the back				92	in the centre	Hock angularity	straight				94	sickled	Hock develop.	swollen				105	dry	Pasterns	weak				93	strong	Foot angle	low angles				100	steep angles	Fore udder length	short				107	long	Rear udder width	narrow				96	wide	Rear udder height	low				100	high	Susp. ligament	weak				101	strong	Udder depth	deep				91	shallow	Fore udder att.	loose				95	tight	Udder balance	staged				99	inclined	Teat length	short				96	long	Teat thickness	thin				108	thick	Teat placem. (front)	wide				117	close	Teat placem. (rear)	wide				103	close	Teat direction (rear)	outwards				102	inwards	Udder cleanness	add. teats				104	clean udder
Trait	76	88	100	112	124																																																																																																																																																																																																																																				
Frame					106																																																																																																																																																																																																																																				
Rump					93																																																																																																																																																																																																																																				
Feet & Legs					105																																																																																																																																																																																																																																				
Udder					100																																																																																																																																																																																																																																				
Final Score					101																																																																																																																																																																																																																																				
Muscling	light				93	heavy																																																																																																																																																																																																																																			
Height at cross	small				110	large																																																																																																																																																																																																																																			
Chest width	shallow				99	deep																																																																																																																																																																																																																																			
Body depth	shallow				106	deep																																																																																																																																																																																																																																			
Backline	weak				99	strong																																																																																																																																																																																																																																			
Rump length	short				103	long																																																																																																																																																																																																																																			
Rump width	narrow				93	wide																																																																																																																																																																																																																																			
Rump angle	ascending				99	sloped																																																																																																																																																																																																																																			
Thurl position	in the back				92	in the centre																																																																																																																																																																																																																																			
Hock angularity	straight				94	sickled																																																																																																																																																																																																																																			
Hock develop.	swollen				105	dry																																																																																																																																																																																																																																			
Pasterns	weak				93	strong																																																																																																																																																																																																																																			
Foot angle	low angles				100	steep angles																																																																																																																																																																																																																																			
Fore udder length	short				107	long																																																																																																																																																																																																																																			
Rear udder width	narrow				96	wide																																																																																																																																																																																																																																			
Rear udder height	low				100	high																																																																																																																																																																																																																																			
Susp. ligament	weak				101	strong																																																																																																																																																																																																																																			
Udder depth	deep				91	shallow																																																																																																																																																																																																																																			
Fore udder att.	loose				95	tight																																																																																																																																																																																																																																			
Udder balance	staged				99	inclined																																																																																																																																																																																																																																			
Teat length	short				96	long																																																																																																																																																																																																																																			
Teat thickness	thin				108	thick																																																																																																																																																																																																																																			
Teat placem. (front)	wide				117	close																																																																																																																																																																																																																																			
Teat placem. (rear)	wide				103	close																																																																																																																																																																																																																																			
Teat direction (rear)	outwards				102	inwards																																																																																																																																																																																																																																			
Udder cleanness	add. teats				104	clean udder																																																																																																																																																																																																																																			

Proof: ZAR / 04-2023

Atlantis

356930

Born: 28.12.2019
AT 96 5087 669



♂ Gs Aristo (♂ Amor), (♀ Rosalie)

♀ Ramona GP 81 (♂ Cadence)

2/1 11020 4.25 468 3.65 402

♀ Rosi GP 84 (♂ Gs Huvi)

5/4 11456 4.45 510 4.20 481



Atlantis

genomic

BROWN SWISS

gTMI 126 75%

Milk **Fitness** **Persistence**

Milk	MI 115 84%	Beef Performance	BI 88 64%	Fitness	FIT 112 76%	Type traits	- Daughters																																																																																																																																																																																																																																		
Milk +1008 kg	Fat -0.36 % Protein -0.10 % +11 kg +28 kg	Daily net gain 95 65%	Carcass percentage 87 62%	Carcass grade 88 60%	Longevity 108 65%	Udder health 109 78%	Calving ease pat. 104 91%	Calving ease mat. 110 72%	Prod. increase 106 67%	Persistence 113 75%	Som. cell count 106 75%	Fertility mat. 104 63%	Milking speed 104 80%	Vitality 99 77%	Ecol. TMI 117 80%																																																																																																																																																																																																																										
Daughters Herds	Cappa-Casein BB Beta-Casein A2A2	<table border="1"> <thead> <tr> <th>Trait</th> <th>76</th> <th>88</th> <th>100</th> <th>112</th> <th>124</th> </tr> </thead> <tbody> <tr><td>Frame</td><td></td><td></td><td></td><td></td><td>99</td></tr> <tr><td>Rump</td><td></td><td></td><td></td><td></td><td>99</td></tr> <tr><td>Feet & Legs</td><td></td><td></td><td></td><td></td><td>100</td></tr> <tr><td>Udder</td><td></td><td></td><td></td><td></td><td>104</td></tr> <tr><td>Final Score</td><td></td><td></td><td></td><td></td><td>102</td></tr> <tr><td>Muscling</td><td>light</td><td></td><td></td><td></td><td>98</td><td>heavy</td></tr> <tr><td>Height at cross</td><td>small</td><td></td><td></td><td></td><td>97</td><td>large</td></tr> <tr><td>Chest width</td><td>shallow</td><td></td><td></td><td></td><td>97</td><td>deep</td></tr> <tr><td>Body depth</td><td>shallow</td><td></td><td></td><td></td><td>99</td><td>deep</td></tr> <tr><td>Backline</td><td>weak</td><td></td><td></td><td></td><td>103</td><td>strong</td></tr> <tr><td>Rump length</td><td>short</td><td></td><td></td><td></td><td>97</td><td>long</td></tr> <tr><td>Rump width</td><td>narrow</td><td></td><td></td><td></td><td>90</td><td>wide</td></tr> <tr><td>Rump angle</td><td>ascending</td><td></td><td></td><td></td><td>102</td><td>sloped</td></tr> <tr><td>Thurl position</td><td>in the back</td><td></td><td></td><td></td><td>107</td><td>in the centre</td></tr> <tr><td>Hock angularity</td><td>straight</td><td></td><td></td><td></td><td>96</td><td>sickled</td></tr> <tr><td>Hock develop.</td><td>swollen</td><td></td><td></td><td></td><td>100</td><td>dry</td></tr> <tr><td>Pasterns</td><td>weak</td><td></td><td></td><td></td><td>101</td><td>strong</td></tr> <tr><td>Foot angle</td><td>low angles</td><td></td><td></td><td></td><td>96</td><td>steep angles</td></tr> <tr><td>Fore udder length</td><td>short</td><td></td><td></td><td></td><td>106</td><td>long</td></tr> <tr><td>Rear udder width</td><td>narrow</td><td></td><td></td><td></td><td>104</td><td>wide</td></tr> <tr><td>Rear udder height</td><td>low</td><td></td><td></td><td></td><td>99</td><td>high</td></tr> <tr><td>Susp. ligament</td><td>weak</td><td></td><td></td><td></td><td>106</td><td>strong</td></tr> <tr><td>Udder depth</td><td>deep</td><td></td><td></td><td></td><td>97</td><td>shallow</td></tr> <tr><td>Fore udder att.</td><td>loose</td><td></td><td></td><td></td><td>104</td><td>tight</td></tr> <tr><td>Udder balance</td><td>staged</td><td></td><td></td><td></td><td>100</td><td>inclined</td></tr> <tr><td>Teat length</td><td>short</td><td></td><td></td><td></td><td>103</td><td>long</td></tr> <tr><td>Teat thickness</td><td>thin</td><td></td><td></td><td></td><td>99</td><td>thick</td></tr> <tr><td>Teat placem. (front)</td><td>wide</td><td></td><td></td><td></td><td>102</td><td>close</td></tr> <tr><td>Teat placem. (rear)</td><td>wide</td><td></td><td></td><td></td><td>101</td><td>close</td></tr> <tr><td>Teat direction (rear)</td><td>outwards</td><td></td><td></td><td></td><td>98</td><td>inwards</td></tr> <tr><td>Udder cleanness</td><td>add. teats</td><td></td><td></td><td></td><td>103</td><td>clean udder</td></tr> </tbody> </table>														Trait	76	88	100	112	124	Frame					99	Rump					99	Feet & Legs					100	Udder					104	Final Score					102	Muscling	light				98	heavy	Height at cross	small				97	large	Chest width	shallow				97	deep	Body depth	shallow				99	deep	Backline	weak				103	strong	Rump length	short				97	long	Rump width	narrow				90	wide	Rump angle	ascending				102	sloped	Thurl position	in the back				107	in the centre	Hock angularity	straight				96	sickled	Hock develop.	swollen				100	dry	Pasterns	weak				101	strong	Foot angle	low angles				96	steep angles	Fore udder length	short				106	long	Rear udder width	narrow				104	wide	Rear udder height	low				99	high	Susp. ligament	weak				106	strong	Udder depth	deep				97	shallow	Fore udder att.	loose				104	tight	Udder balance	staged				100	inclined	Teat length	short				103	long	Teat thickness	thin				99	thick	Teat placem. (front)	wide				102	close	Teat placem. (rear)	wide				101	close	Teat direction (rear)	outwards				98	inwards	Udder cleanness	add. teats				103	clean udder
Trait	76	88	100	112	124																																																																																																																																																																																																																																				
Frame					99																																																																																																																																																																																																																																				
Rump					99																																																																																																																																																																																																																																				
Feet & Legs					100																																																																																																																																																																																																																																				
Udder					104																																																																																																																																																																																																																																				
Final Score					102																																																																																																																																																																																																																																				
Muscling	light				98	heavy																																																																																																																																																																																																																																			
Height at cross	small				97	large																																																																																																																																																																																																																																			
Chest width	shallow				97	deep																																																																																																																																																																																																																																			
Body depth	shallow				99	deep																																																																																																																																																																																																																																			
Backline	weak				103	strong																																																																																																																																																																																																																																			
Rump length	short				97	long																																																																																																																																																																																																																																			
Rump width	narrow				90	wide																																																																																																																																																																																																																																			
Rump angle	ascending				102	sloped																																																																																																																																																																																																																																			
Thurl position	in the back				107	in the centre																																																																																																																																																																																																																																			
Hock angularity	straight				96	sickled																																																																																																																																																																																																																																			
Hock develop.	swollen				100	dry																																																																																																																																																																																																																																			
Pasterns	weak				101	strong																																																																																																																																																																																																																																			
Foot angle	low angles				96	steep angles																																																																																																																																																																																																																																			
Fore udder length	short				106	long																																																																																																																																																																																																																																			
Rear udder width	narrow				104	wide																																																																																																																																																																																																																																			
Rear udder height	low				99	high																																																																																																																																																																																																																																			
Susp. ligament	weak				106	strong																																																																																																																																																																																																																																			
Udder depth	deep				97	shallow																																																																																																																																																																																																																																			
Fore udder att.	loose				104	tight																																																																																																																																																																																																																																			
Udder balance	staged				100	inclined																																																																																																																																																																																																																																			
Teat length	short				103	long																																																																																																																																																																																																																																			
Teat thickness	thin				99	thick																																																																																																																																																																																																																																			
Teat placem. (front)	wide				102	close																																																																																																																																																																																																																																			
Teat placem. (rear)	wide				101	close																																																																																																																																																																																																																																			
Teat direction (rear)	outwards				98	inwards																																																																																																																																																																																																																																			
Udder cleanness	add. teats				103	clean udder																																																																																																																																																																																																																																			

Proof: ZAR / 04-2023

Calderon

435473

Born: 09.11.2019
DE 08 17326975
aAa 651423



♂ **Casanova** (♂ Cadence), (♀ 4138)

♀ **Pisa** (♂ Cadura)

2/2 8405 4.30 362 3.46 291

♀ **Pai** (♂ Ag Hercules)

3/2 9832 4.72 465 4.49 442



Calderon

Wolfgang Schürle

gTMI
126
77%

Milk

Fitness

Udder

Milk MI 119 85%

Milk	Fat	Protein
+853 kg	-0.07 %	-0.06 %
	+30 kg	+25 kg

Daughters Herds

Cappa-Casein BB
Beta-Casein A1A2



Pisa, dam of Calderon

Beef Performance BI 85 68%

Daily net gain 92 71%

Carcass percentage 84 68%

Carcass grade 88 65%

Fitness FIT 107 78%

Longevity 105 66%

Udder health 103 80%

Calving ease pat. 101 94%

Calving ease mat. 107 77%

Prod. increase 112 68%

Persistence 113 76%

Som. cell count 101 76%

Fertility mat. 105 65%

Milking speed 102 81%

Vitality 91 82%

Ecol. TMI 118 82%

Type traits - Daughters

Trait	76	88	100	112	124
Frame					103
Rump					95
Feet & Legs					101
Udder					113
Final Score					107
Muscling	light				92 heavy
Height at cross	small				110 large
Chest width	shallow				95 deep
Body depth	shallow				105 deep
Backline	weak				93 strong
Rump length	short				104 long
Rump width	narrow				100 wide
Rump angle	ascending				94 sloped
Thurl position	in the back				88 in the centre
Hock angularity	straight				98 sickled
Hock develop.	swollen				103 dry
Pasterns	weak				100 strong
Foot angle	low angles				100 steep angles
Fore udder length	short				99 long
Rear udder width	narrow				105 wide
Rear udder height	low				117 high
Susp. ligament	weak				105 strong
Udder depth	deep				106 shallow
Fore udder att.	loose				102 tight
Udder balance	staged				94 inclined
Teat length	short				100 long
Teat thickness	thin				102 thick
Teat placem. (front)	wide				102 close
Teat placem. (rear)	wide				104 close
Teat direction (rear)	outwards				105 inwards
Udder cleanness	add. teats				94 clean udder

Proof: ZAR / 04-2023

Campari

347090

Born: 23.05.2020
DE 09 56064792
aAa 561423



♂ **Casanova** (♂ Cadence), (♀ 4138)

♀ **Nixdau** (♂ Ag Vanpari)

3/2 9487 4.31 409 3.74 355

♀ **Nivea** (♂ Ag Hapat)

4/4 9307 4.18 389 4.16 388



Campari

Luca Neill

gTMI
131
76%

Milk

Fitness

Type

Milk MI 124 84%

Milk	Fat	Protein
+1121 kg	-0.14 %	-0.10 %
	+35 kg	+32 kg

Daughters Herds

Cappa-Casein BB
Beta-Casein A1A2



Nixdau, dam of Campari, 2nd lac.

Beef Performance BI 93 65%

Daily net gain 98 67%

Carcass percentage 93 63%

Carcass grade 89 62%

Fitness FIT 107 77%

Longevity 104 66%

Udder health 103 79%

Calving ease pat. 103 91%

Calving ease mat. 104 73%

Prod. increase 108 68%

Persistence 108 75%

Som. cell count 100 75%

Fertility mat. 106 64%

Milking speed 106 79%

Vitality 94 73%

Ecol. TMI 121 80%

Type traits - Daughters

Trait	76	88	100	112	124
Frame					107
Rump					100
Feet & Legs					109
Udder					111
Final Score					109
Muscling	light				89 heavy
Height at cross	small				113 large
Chest width	shallow				98 deep
Body depth	shallow				105 deep
Backline	weak				103 strong
Rump length	short				106 long
Rump width	narrow				98 wide
Rump angle	ascending				100 sloped
Thurl position	in the back				96 in the centre
Hock angularity	straight				93 sickled
Hock develop.	swollen				101 dry
Pasterns	weak				102 strong
Foot angle	low angles				113 steep angles
Fore udder length	short				103 long
Rear udder width	narrow				104 wide
Rear udder height	low				115 high
Susp. ligament	weak				93 strong
Udder depth	deep				103 shallow
Fore udder att.	loose				104 tight
Udder balance	staged				103 inclined
Teat length	short				90 long
Teat thickness	thin				107 thick
Teat placem. (front)	wide				94 close
Teat placem. (rear)	wide				98 close
Teat direction (rear)	outwards				100 inwards
Udder cleanness	add. teats				95 clean udder

Proof: ZAR / 04-2023

Caracala

435505

Born: 18.12.2019
DE 08 17404903



♂ **Casanova** (♂ Cadence), (♀ Marion)
 ♀ **Stella** (♂ Voicemail)
 5/4 8474 4.19 355 3.72 316
 ♀ **Stella** (♂ Huxoy)
 6/6 8245 4.18 345 3.62 299



Caracala

genomic
BROWN SWISS

gTMI 128 75%

Milk **Fitness** **Type**

Milk	MI 118 84%	Beef Performance	BI 99 64%	Fitness	FIT 110 76%	Type traits	- Daughters																																																																																																																																																																																																																				
Milk +840 kg	Fat -0.12 % Protein -0.06 % +25 kg +25 kg	Daily net gain 102 66%	Carcass percentage 97 63%	Longevity 107 64%	Udder health 108 78%	Trait 76 88 100 112 124																																																																																																																																																																																																																					
Daughters Herds	Cappa-Casein BB Beta-Casein A1A2	Carcass grade 92 60%	Longevity 107 64%	Udder health 108 78%	Calving ease pat. 112 94%	<table border="1"> <tr><td>Frame</td><td></td><td></td><td></td><td></td><td>108</td></tr> <tr><td>Rump</td><td></td><td></td><td></td><td></td><td>105</td></tr> <tr><td>Feet & Legs</td><td></td><td></td><td></td><td></td><td>104</td></tr> <tr><td>Udder</td><td></td><td></td><td></td><td></td><td>112</td></tr> <tr><td>Final Score</td><td></td><td></td><td></td><td></td><td>110</td></tr> <tr><td>Muscling</td><td>light</td><td></td><td></td><td></td><td>92</td><td>heavy</td></tr> <tr><td>Height at cross</td><td>small</td><td></td><td></td><td></td><td>107</td><td>large</td></tr> <tr><td>Chest width</td><td>shallow</td><td></td><td></td><td></td><td>101</td><td>deep</td></tr> <tr><td>Body depth</td><td>shallow</td><td></td><td></td><td></td><td>105</td><td>deep</td></tr> <tr><td>Backline</td><td>weak</td><td></td><td></td><td></td><td>104</td><td>strong</td></tr> <tr><td>Rump length</td><td>short</td><td></td><td></td><td></td><td>108</td><td>long</td></tr> <tr><td>Rump width</td><td>narrow</td><td></td><td></td><td></td><td>116</td><td>wide</td></tr> <tr><td>Rump angle</td><td>ascending</td><td></td><td></td><td></td><td>97</td><td>sloped</td></tr> <tr><td>Thurl position</td><td>in the back</td><td></td><td></td><td></td><td>90</td><td>in the centre</td></tr> <tr><td>Hock angularity</td><td>straight</td><td></td><td></td><td></td><td>102</td><td>sickled</td></tr> <tr><td>Hock develop.</td><td>swollen</td><td></td><td></td><td></td><td>112</td><td>dry</td></tr> <tr><td>Pasterns</td><td>weak</td><td></td><td></td><td></td><td>94</td><td>strong</td></tr> <tr><td>Foot angle</td><td>low angles</td><td></td><td></td><td></td><td>100</td><td>steep angles</td></tr> <tr><td>Fore udder length</td><td>short</td><td></td><td></td><td></td><td>105</td><td>long</td></tr> <tr><td>Rear udder width</td><td>narrow</td><td></td><td></td><td></td><td>101</td><td>wide</td></tr> <tr><td>Rear udder height</td><td>low</td><td></td><td></td><td></td><td>107</td><td>high</td></tr> <tr><td>Susp. ligament</td><td>weak</td><td></td><td></td><td></td><td>109</td><td>strong</td></tr> <tr><td>Udder depth</td><td>deep</td><td></td><td></td><td></td><td>108</td><td>shallow</td></tr> <tr><td>Fore udder att.</td><td>loose</td><td></td><td></td><td></td><td>105</td><td>tight</td></tr> <tr><td>Udder balance</td><td>staged</td><td></td><td></td><td></td><td>102</td><td>inclined</td></tr> <tr><td>Teat length</td><td>short</td><td></td><td></td><td></td><td>107</td><td>long</td></tr> <tr><td>Teat thickness</td><td>thin</td><td></td><td></td><td></td><td>111</td><td>thick</td></tr> <tr><td>Teat placem. (front)</td><td>wide</td><td></td><td></td><td></td><td>102</td><td>close</td></tr> <tr><td>Teat placem. (rear)</td><td>wide</td><td></td><td></td><td></td><td>107</td><td>close</td></tr> <tr><td>Teat direction (rear)</td><td>outwards</td><td></td><td></td><td></td><td>101</td><td>inwards</td></tr> <tr><td>Udder cleanness</td><td>add. teats</td><td></td><td></td><td></td><td>100</td><td>clean udder</td></tr> </table>		Frame					108	Rump					105	Feet & Legs					104	Udder					112	Final Score					110	Muscling	light				92	heavy	Height at cross	small				107	large	Chest width	shallow				101	deep	Body depth	shallow				105	deep	Backline	weak				104	strong	Rump length	short				108	long	Rump width	narrow				116	wide	Rump angle	ascending				97	sloped	Thurl position	in the back				90	in the centre	Hock angularity	straight				102	sickled	Hock develop.	swollen				112	dry	Pasterns	weak				94	strong	Foot angle	low angles				100	steep angles	Fore udder length	short				105	long	Rear udder width	narrow				101	wide	Rear udder height	low				107	high	Susp. ligament	weak				109	strong	Udder depth	deep				108	shallow	Fore udder att.	loose				105	tight	Udder balance	staged				102	inclined	Teat length	short				107	long	Teat thickness	thin				111	thick	Teat placem. (front)	wide				102	close	Teat placem. (rear)	wide				107	close	Teat direction (rear)	outwards				101	inwards	Udder cleanness	add. teats				100	clean udder
Frame					108																																																																																																																																																																																																																						
Rump					105																																																																																																																																																																																																																						
Feet & Legs					104																																																																																																																																																																																																																						
Udder					112																																																																																																																																																																																																																						
Final Score					110																																																																																																																																																																																																																						
Muscling	light				92	heavy																																																																																																																																																																																																																					
Height at cross	small				107	large																																																																																																																																																																																																																					
Chest width	shallow				101	deep																																																																																																																																																																																																																					
Body depth	shallow				105	deep																																																																																																																																																																																																																					
Backline	weak				104	strong																																																																																																																																																																																																																					
Rump length	short				108	long																																																																																																																																																																																																																					
Rump width	narrow				116	wide																																																																																																																																																																																																																					
Rump angle	ascending				97	sloped																																																																																																																																																																																																																					
Thurl position	in the back				90	in the centre																																																																																																																																																																																																																					
Hock angularity	straight				102	sickled																																																																																																																																																																																																																					
Hock develop.	swollen				112	dry																																																																																																																																																																																																																					
Pasterns	weak				94	strong																																																																																																																																																																																																																					
Foot angle	low angles				100	steep angles																																																																																																																																																																																																																					
Fore udder length	short				105	long																																																																																																																																																																																																																					
Rear udder width	narrow				101	wide																																																																																																																																																																																																																					
Rear udder height	low				107	high																																																																																																																																																																																																																					
Susp. ligament	weak				109	strong																																																																																																																																																																																																																					
Udder depth	deep				108	shallow																																																																																																																																																																																																																					
Fore udder att.	loose				105	tight																																																																																																																																																																																																																					
Udder balance	staged				102	inclined																																																																																																																																																																																																																					
Teat length	short				107	long																																																																																																																																																																																																																					
Teat thickness	thin				111	thick																																																																																																																																																																																																																					
Teat placem. (front)	wide				102	close																																																																																																																																																																																																																					
Teat placem. (rear)	wide				107	close																																																																																																																																																																																																																					
Teat direction (rear)	outwards				101	inwards																																																																																																																																																																																																																					
Udder cleanness	add. teats				100	clean udder																																																																																																																																																																																																																					
Milk		Beef Performance		Fitness		Type traits																																																																																																																																																																																																																					
Daily net gain 102 66%		Carcass percentage 97 63%		Longevity 107 64%		Udder health 108 78%																																																																																																																																																																																																																					
Carcass grade 92 60%		Longevity 107 64%		Udder health 108 78%		Calving ease pat. 112 94%																																																																																																																																																																																																																					
Longevity 107 64%		Udder health 108 78%		Calving ease mat. 105 76%		Prod. increase 113 67%																																																																																																																																																																																																																					
Udder health 108 78%		Calving ease mat. 105 76%		Persistence 117 75%		Som. cell count 105 74%																																																																																																																																																																																																																					
Calving ease pat. 112 94%		Persistence 117 75%		Fertility mat. 103 63%		Milking speed 101 79%																																																																																																																																																																																																																					
Calving ease mat. 105 76%		Fertility mat. 103 63%		Vitality 95 78%		Ecol. TMI 123 80%																																																																																																																																																																																																																					
Prod. increase 113 67%		Vitality 95 78%		Ecol. TMI 123 80%																																																																																																																																																																																																																							

Proof: ZAR / 04-2023

Casanova

435402

Born: 02.12.2017
DE 08 16820676
aAa 216435



♂ **CADENCE** (♂ BROOKINGS), (♀ BUFFY)
 ♀ **MARION** (♂ GS HUVI)
 3/2 9236 3.90 360 3.51 325
 ♀ **603** (♂ PAYSSLI)
 7/7 9030 4.18 378 3.66 330



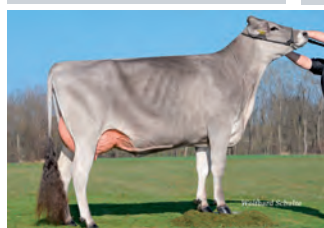
Casanova

progeny tested
BROWN SWISS

gTMI 110 94%

Udder **Persistence** **Frame**

Milk	MI 109 98%	Beef Performance	BI 86 96%	Fitness	FIT 101 91%	Type traits	249 Daughters																																																																																																																																																																																																																				
Milk +725 kg	Fat -0.27 % Protein -0.12 % +8 kg +16 kg	Daily net gain 95 97%	Carcass percentage 86 90%	Longevity 100 81%	Udder health 101 95%	Trait 76 88 100 112 124																																																																																																																																																																																																																					
Daughters Herds	Cappa-Casein BB Beta-Casein A1A2	Carcass grade 85 94%	Longevity 100 81%	Udder health 101 95%	Calving ease pat. 102 99%	<table border="1"> <tr><td>Frame</td><td></td><td></td><td></td><td></td><td>113</td></tr> <tr><td>Rump</td><td></td><td></td><td></td><td></td><td>105</td></tr> <tr><td>Feet & Legs</td><td></td><td></td><td></td><td></td><td>97</td></tr> <tr><td>Udder</td><td></td><td></td><td></td><td></td><td>123</td></tr> <tr><td>Final Score</td><td></td><td></td><td></td><td></td><td>115</td></tr> <tr><td>Muscling</td><td>light</td><td></td><td></td><td></td><td>96</td><td>heavy</td></tr> <tr><td>Height at cross</td><td>small</td><td></td><td></td><td></td><td>124</td><td>large</td></tr> <tr><td>Chest width</td><td>shallow</td><td></td><td></td><td></td><td>103</td><td>deep</td></tr> <tr><td>Body depth</td><td>shallow</td><td></td><td></td><td></td><td>112</td><td>deep</td></tr> <tr><td>Backline</td><td>weak</td><td></td><td></td><td></td><td>99</td><td>strong</td></tr> <tr><td>Rump length</td><td>short</td><td></td><td></td><td></td><td>115</td><td>long</td></tr> <tr><td>Rump width</td><td>narrow</td><td></td><td></td><td></td><td>116</td><td>wide</td></tr> <tr><td>Rump angle</td><td>ascending</td><td></td><td></td><td></td><td>90</td><td>sloped</td></tr> <tr><td>Thurl position</td><td>in the back</td><td></td><td></td><td></td><td>85</td><td>in the centre</td></tr> <tr><td>Hock angularity</td><td>straight</td><td></td><td></td><td></td><td>101</td><td>sickled</td></tr> <tr><td>Hock develop.</td><td>swollen</td><td></td><td></td><td></td><td>99</td><td>dry</td></tr> <tr><td>Pasterns</td><td>weak</td><td></td><td></td><td></td><td>88</td><td>strong</td></tr> <tr><td>Foot angle</td><td>low angles</td><td></td><td></td><td></td><td>112</td><td>steep angles</td></tr> <tr><td>Fore udder length</td><td>short</td><td></td><td></td><td></td><td>92</td><td>long</td></tr> <tr><td>Rear udder width</td><td>narrow</td><td></td><td></td><td></td><td>99</td><td>wide</td></tr> <tr><td>Rear udder height</td><td>low</td><td></td><td></td><td></td><td>115</td><td>high</td></tr> <tr><td>Susp. ligament</td><td>weak</td><td></td><td></td><td></td><td>112</td><td>strong</td></tr> <tr><td>Udder depth</td><td>deep</td><td></td><td></td><td></td><td>119</td><td>shallow</td></tr> <tr><td>Fore udder att.</td><td>loose</td><td></td><td></td><td></td><td>111</td><td>tight</td></tr> <tr><td>Udder balance</td><td>staged</td><td></td><td></td><td></td><td>106</td><td>inclined</td></tr> <tr><td>Teat length</td><td>short</td><td></td><td></td><td></td><td>106</td><td>long</td></tr> <tr><td>Teat thickness</td><td>thin</td><td></td><td></td><td></td><td>111</td><td>thick</td></tr> <tr><td>Teat placem. (front)</td><td>wide</td><td></td><td></td><td></td><td>100</td><td>close</td></tr> <tr><td>Teat placem. (rear)</td><td>wide</td><td></td><td></td><td></td><td>102</td><td>close</td></tr> <tr><td>Teat direction (rear)</td><td>outwards</td><td></td><td></td><td></td><td>109</td><td>inwards</td></tr> <tr><td>Udder cleanness</td><td>add. teats</td><td></td><td></td><td></td><td>94</td><td>clean udder</td></tr> </table>		Frame					113	Rump					105	Feet & Legs					97	Udder					123	Final Score					115	Muscling	light				96	heavy	Height at cross	small				124	large	Chest width	shallow				103	deep	Body depth	shallow				112	deep	Backline	weak				99	strong	Rump length	short				115	long	Rump width	narrow				116	wide	Rump angle	ascending				90	sloped	Thurl position	in the back				85	in the centre	Hock angularity	straight				101	sickled	Hock develop.	swollen				99	dry	Pasterns	weak				88	strong	Foot angle	low angles				112	steep angles	Fore udder length	short				92	long	Rear udder width	narrow				99	wide	Rear udder height	low				115	high	Susp. ligament	weak				112	strong	Udder depth	deep				119	shallow	Fore udder att.	loose				111	tight	Udder balance	staged				106	inclined	Teat length	short				106	long	Teat thickness	thin				111	thick	Teat placem. (front)	wide				100	close	Teat placem. (rear)	wide				102	close	Teat direction (rear)	outwards				109	inwards	Udder cleanness	add. teats				94	clean udder
Frame					113																																																																																																																																																																																																																						
Rump					105																																																																																																																																																																																																																						
Feet & Legs					97																																																																																																																																																																																																																						
Udder					123																																																																																																																																																																																																																						
Final Score					115																																																																																																																																																																																																																						
Muscling	light				96	heavy																																																																																																																																																																																																																					
Height at cross	small				124	large																																																																																																																																																																																																																					
Chest width	shallow				103	deep																																																																																																																																																																																																																					
Body depth	shallow				112	deep																																																																																																																																																																																																																					
Backline	weak				99	strong																																																																																																																																																																																																																					
Rump length	short				115	long																																																																																																																																																																																																																					
Rump width	narrow				116	wide																																																																																																																																																																																																																					
Rump angle	ascending				90	sloped																																																																																																																																																																																																																					
Thurl position	in the back				85	in the centre																																																																																																																																																																																																																					
Hock angularity	straight				101	sickled																																																																																																																																																																																																																					
Hock develop.	swollen				99	dry																																																																																																																																																																																																																					
Pasterns	weak				88	strong																																																																																																																																																																																																																					
Foot angle	low angles				112	steep angles																																																																																																																																																																																																																					
Fore udder length	short				92	long																																																																																																																																																																																																																					
Rear udder width	narrow				99	wide																																																																																																																																																																																																																					
Rear udder height	low				115	high																																																																																																																																																																																																																					
Susp. ligament	weak				112	strong																																																																																																																																																																																																																					
Udder depth	deep				119	shallow																																																																																																																																																																																																																					
Fore udder att.	loose				111	tight																																																																																																																																																																																																																					
Udder balance	staged				106	inclined																																																																																																																																																																																																																					
Teat length	short				106	long																																																																																																																																																																																																																					
Teat thickness	thin				111	thick																																																																																																																																																																																																																					
Teat placem. (front)	wide				100	close																																																																																																																																																																																																																					
Teat placem. (rear)	wide				102	close																																																																																																																																																																																																																					
Teat direction (rear)	outwards				109	inwards																																																																																																																																																																																																																					
Udder cleanness	add. teats				94	clean udder																																																																																																																																																																																																																					
Milk		Beef Performance		Fitness		Type traits																																																																																																																																																																																																																					
Daily net gain 95 97%		Carcass percentage 86 90%		Longevity 100 81%		Udder health 101 95%																																																																																																																																																																																																																					
Carcass grade 85 94%		Longevity 100 81%		Udder health 101 95%		Calving ease pat. 102 99%																																																																																																																																																																																																																					
Udder health 101 95%		Calving ease pat. 102 99%		Prod. increase 118 75%		Persistence 112 98%																																																																																																																																																																																																																					
Calving ease pat. 102 99%		Prod. increase 118 75%		Persistence 112 98%		Som. cell count 98 96%																																																																																																																																																																																																																					
Calving ease mat. 102 95%		Persistence 112 98%		Fertility mat. 101 85%		Milking speed 101 97%																																																																																																																																																																																																																					
Prod. increase 118 75%		Fertility mat. 101 85%		Vitality 86 97%		Ecol. TMI 111 95%																																																																																																																																																																																																																					
Persistence 112 98%		Vitality 86 97%		Ecol. TMI 111 95%																																																																																																																																																																																																																							



Ballerina, daughter of Casanova

Proof: ZAR / 04-2023

Jakarta

345840

Born: 10.10.2015
DE 09 50954498
aAa 561423



♂ **AG James** (♂ Jaguar), (♀ Selina)

♀ **Susi** (♂ Huray)

6/5 8243 4.45 367 3.91 322

♀ **Sybille** (♂ Vasir)

5/5 11912 3.95 470 3.39 404



Jakarta

gTMI
121

91%

Longevity

Fitness

Type

Milk MI 112 97%

Milk +478 kg
Fat +0.02 %
Protein -0.03 %
+21 kg +15 kg

Daughters 109
Herds 98

Cappa-Casein BB
Beta-Casein A2A2

Beef Performance BI 99 80%

Daily net gain 98 84%

Carcass percentage 106 70%

Carcass grade 97 79%

Fitness FIT 107 88%

Longevity 115 78%

Udder health 102 91%

Calving ease pat. 103 98%

Calving ease mat. 107 91%

Prod. increase 116 92%

Persistence 106 94%

Som. cell count 104 92%

Fertility mat. 99 80%

Milking speed 109 92%

Vitality 98 94%

Ecol. TMI 121 93%

Type traits 61 Daughters

Trait	76	88	100	112	124
Frame					103
Rump					106
Feet & Legs					107
Udder					113
Final Score					112
Muscling	light				117 heavy
Height at cross	small				95 large
Chest width	shallow				110 deep
Body depth	shallow				107 deep
Backline	weak				97 strong
Rump length	short				103 long
Rump width	narrow				99 wide
Rump angle	ascending				95 sloped
Thurl position	in the back				105 in the centre
Hock angularity	straight				97 sickled
Hock develop.	swollen				86 dry
Pasterns	weak				111 strong
Foot angle	low angles				99 steep angles
Fore udder length	short				111 long
Rear udder width	narrow				99 wide
Rear udder height	low				102 high
Susp. ligament	weak				105 strong
Udder depth	deep				106 shallow
Fore udder att.	loose				107 tight
Udder balance	staged				112 inclined
Teat length	short				95 long
Teat thickness	thin				99 thick
Teat placem. (front)	wide				108 close
Teat placem. (rear)	wide				120 close
Teat direction (rear)	outwards				116 inwards
Udder cleanness	add. teats				101 clean udder



Natalie, daughter of Jakarta, 1st lac.

Proof: ZAR / 04-2023

Vavio

435266

Born: 20.05.2015
DE 08 16006421



♂ **VAVIGO** (♂ VASSLI), (♀ NORIS)

♀ **BONITA** (♂ GS HUXOY)

8/8 10223 3.71 379 3.51 359

♀ **BABETTE** (♂ PRONTO)

4/4 7424 4.28 318 3.74 277



Vavio

gTMI
133

94%

Udder

Milk

Fitness

Milk MI 115 98%

Milk +808 kg
Fat -0.21 %
Protein -0.04 %
+16 kg +26 kg

Daughters 213
Herds 115

Cappa-Casein BB
Beta-Casein A2A2

Beef Performance BI 108 88%

Daily net gain 106 94%

Carcass percentage 104 67%

Carcass grade 105 85%

Fitness FIT 115 91%

Longevity 110 82%

Udder health 112 94%

Calving ease pat. 101 95%

Calving ease mat. 100 89%

Prod. increase 111 95%

Persistence 119 97%

Som. cell count 112 94%

Fertility mat. 109 85%

Milking speed 102 95%

Vitality 99 88%

Ecol. TMI 125 94%

Type traits 135 Daughters

Trait	76	88	100	112	124
Frame					108
Rump					92
Feet & Legs					103
Udder					112
Final Score					109
Muscling	light				97 heavy
Height at cross	small				111 large
Chest width	shallow				98 deep
Body depth	shallow				106 deep
Backline	weak				94 strong
Rump length	short				100 long
Rump width	narrow				103 wide
Rump angle	ascending				94 sloped
Thurl position	in the back				88 in the centre
Hock angularity	straight				95 sickled
Hock develop.	swollen				102 dry
Pasterns	weak				111 strong
Foot angle	low angles				96 steep angles
Fore udder length	short				96 long
Rear udder width	narrow				102 wide
Rear udder height	low				118 high
Susp. ligament	weak				112 strong
Udder depth	deep				108 shallow
Fore udder att.	loose				98 tight
Udder balance	staged				97 inclined
Teat length	short				105 long
Teat thickness	thin				85 thick
Teat placem. (front)	wide				104 close
Teat placem. (rear)	wide				98 close
Teat direction (rear)	outwards				98 inwards
Udder cleanness	add. teats				99 clean udder

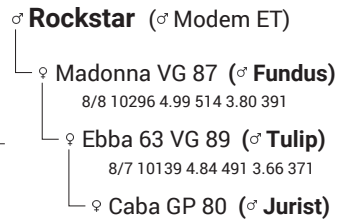


Noris, granddam of Vavio, 4th lac.

Proof: ZAR / 04-2023

Schlei

588698 born: 22.07.2014
RDCDEUM000121491902



progeny tested

RED CATTLE - ANGLER

Ulme

RZG 132 93 %	RZM 115 96 %	RZE 125 88 %	RZS 134 94 %	RZN 114 82 %	RZR 107 69 %	RZKd 107 86 %	RZKm 117 78 %	RZD 95 86 %
----------------------------------	----------------------------------	----------------------------------	----------------------------------	----------------------------------	----------------------------------	-----------------------------------	-----------------------------------	---------------------------------

RZRobot	130	90 %
RZpersistence	112	92 %
Cappa-Casein	--	
Beta-Casein	--/--	
Milk	Fat	Protein
+277 kg	+0.09 %	+0.06 %
	+20 kg	+15 kg
Reliability	96 %	
Daughters	251	
Herds	84	
RZ calfhealth	113	69 %

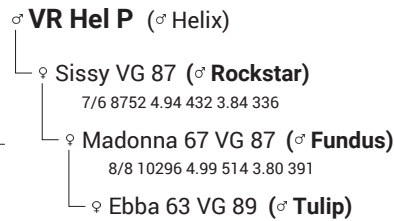
	76	88	100	112	124	
Dairy type						99
Body						103
Feet & Legs						118
Udder						123
Stature	small					94 tall
Rib Structure	flat					102 arched
Body depth	shallow					103 deep
Strength	narrow					107 wide
Rump angle	ascending					98 sloped
Rump width	narrow					98 wide
Rear leg angle	straight					100 sickled
Foot angle	low angle					103 steep angle
Hocks	swollen					108 clean
Rear leg set r.v.	toes out					108 parallel
Front Feet Orientation	outward					104 straight
Locomotion	bad					116 good
Rear udder h.	low					116 high
Suspens. lig.	weak					106 strong
Teat placem.f.	wide					105 close
Teat placem.r.	wide					101 close
Fore udder att.	loose					116 tight
Udder Balance	rear deep					123 front deep
Udder depth	deep					118 shallow
Teat length	short					115 long

- Udder quality
- Udder health
- Components

Proof: VIT / 04-2023 Daughters/Herds: 167/59

Volt P

Pp*
586158 born: 06.08.2017
RDCDEUM000122771388



progeny tested

RED CATTLE - ANGLER

Zanra

RZG 119 79 %	RZM 115 87 %	RZE 99 77 %	RZS 99 79 %	RZN 117 44 %	RZR 97 42 %	RZKd 98 69 %	RZKm 115 59 %	RZD 103 68 %
----------------------------------	----------------------------------	---------------------------------	---------------------------------	----------------------------------	---------------------------------	----------------------------------	-----------------------------------	----------------------------------

RZRobot	---	-- %
RZpersistence	95	60 %
Cappa-Casein	BB	
Beta-Casein	A1A2	
Milk	Fat	Protein
+511 kg	-0.08 %	-0.01 %
	+16 kg	+17 kg
Reliability	87 %	
Daughters	86	
Herds	41	
RZ calfhealth	111	45 %

	76	88	100	112	124	
Dairy type						108
Body						88
Feet & Legs						104
Udder						100
Stature	small					116 tall
Rib Structure	flat					106 arched
Body depth	shallow					93 deep
Strength	narrow					83 wide
Rump angle	ascending					126 sloped
Rump width	narrow					95 wide
Rear leg angle	straight					103 sickled
Foot angle	low angle					99 steep angle
Hocks	swollen					105 clean
Rear leg set r.v.	toes out					104 parallel
Front Feet Orientation	outward					96 straight
Locomotion	bad					101 good
Rear udder h.	low					106 high
Suspens. lig.	weak					113 strong
Teat placem.f.	wide					104 close
Teat placem.r.	wide					107 close
Fore udder att.	loose					92 tight
Udder Balance	rear deep					102 front deep
Udder depth	deep					92 shallow
Teat length	short					124 long

Proof: VIT / 04-2023 Daughters/Herds: 79/36

Barron

204676

Born: 13.01.2018
DE 15 04188021♂ **Boyfriend** (♂ Te Mania Bartel), (♀ Te Mania Lowan)

♀ Agama AFM 7 / 7 / 7 (♂ Red Princ z Pecina)

♀ AFM Gracie of Tool

Proof: 12-2022

Aberdeen Angus



Barron

Genetics from Australia

Calving ease

Type

Performance (own)

Frame	8
Muscularity	8
External appearance	8
Körn.ZW/Körnindex	
Birth weight	36
Daily weight gain - 200 days	1323 g
Daily weight gain - 365 days	1255 g

Relative breeding values

Beef Performance	101	57%
TZW mat.	96	
TZW Daily weight gain 365	106	
TZW Musc. 365	99	

Calving ease

Number	--
% with help of vet	-- %
% stillbirth	-- %

Calvin

204797

Born: 26.02.2020
DE 01 238 73862♂ **HAZ Cendo** (♂ Clashi)

♀ Massa 8/7/7 (♂ Cooper)

♀ Maja 6/6/6 (♂ Gaucho)

♀ Motte (♂ MS Daeo)

Proof: ZAR / 12-2020

Angus



Calvin

Performance (own)

Frame	8
Muscularity	8
External appearance	7
Körn.ZW/Körnindex	
Birth weight	45 kg
Daily weight gain - 200 days	1496 g g
Daily weight gain - 365 days	1483 g g

Relative breeding values

Beef Performance	106	45%
TZW mat.	97	45%
TZW Daily weight gain 365	109	45%
TZW Musc. 365	104	45%

Calving ease

Number	--
% with help of vet	-- %
% stillbirth	-- %

Red Berry

204681

Born: 09.03.2018

DK 8384802043



♂ **ML Red Mulberry** (♂ Mulberry)

♀ Dalrustu (♂ **Battle Cry**)

♀ Dalmistu

Proof: 12-2022

Aberdeen Angus

Red Berry



KeLeKi

genomic

ABERDEEN ANGUS

Genetics from Canada

Type

Beef production

Performance (own)

Frame	8
Muscularity	8
External appearance	8
Körn.ZW/Körnindex	
Birth weight	36
Daily weight gain - 200 days	1421 g
Daily weight gain - 365 days	1225 g

Relative breeding values

Beef Performance	119	51%
TZW mat.	100	
TZW Daily weight gain 365	117	
TZW Musc. 365	116	

Calving ease

Number	--
% with help of vet	-- %
% stillbirth	-- %

Reval

204772

Born: 28.08.2019

DE 05 40076560

♂ **Red Rider** (♂ Red Tom), (♀ Red Bente)

♀ Blarney 8 / 8 / 8 (♂ **Time On**)

♀ Maid H 886 Liss Blarney (♂ **Bandit**)

♀ Maid B440

Proof: VIT / 12-2022

Reval



KeLeKi

progeny tested

ABERDEEN ANGUS

Aberdeen Angus

Performance (own)

Frame	8
Muscularity	8
External appearance	8
Körn.ZW/Körnindex	
Birth weight	35
Daily weight gain - 200 days	1460 g
Daily weight gain - 365 days	1382 g

Relative breeding values

Beef Performance	119	45%
TZW mat.		
TZW Daily weight gain 365	118	
TZW Musc. 365	115	

Calving ease

Number	--
% with help of vet	-- %
% stillbirth	-- %

Holstein
Red Holstein
Fleckvieh
Brown Swiss
Angler

Daughter Proven
Genomic



📷 Anne-Mette Evers



GGI-KENYA

GGI KENYA LTD

Alpha Centre, Godown 60
P.O BOX 18846-00500, Nairobi

Mobile: 0717 88 11 33/ 0750 889 339

E-mail: info@ggikenya.com
Internet: www.ggikenya.com



GGI-SPERMEX
Genetics made in Germany

GGI-SPERMEX GmbH

Am Osterfeld 14
49661 Cloppenburg-Bethen
Germany

Phone: +49 4471 91 74-0
Fax: +49 4471 91 74-74

email: info@ggi-spermex.de
Internet: www.ggi-spermex.de

Ottostraße 26
85521 Ottobrunn
Germany

Phone: +49 89 665 98 46-0
Fax: +49 89 665 98 46-29

email: info@ggi-spermex.de
Internet: www.ggi-spermex.de